

CLOW CANADA - M-67 BRIGADIER MONITOR FIRE HYDRANT SPECIFICATION

TESTING AND DESIGN SPECIFICATIONS (PER AWWA C502 / NSF /ULC & FM)

1. Hydrant shall be manufactured in accordance with AWWA C502 latest revision
2. Hydrant Has been certified by **UL** in accordance with the **ANSI/NSF 61 and ANSI/NSF 372 (LEAD CONTENT VERIFICATION OF PRODUCTS INCONTACT WITH POTABLE WATER)**
3. Hydrant shall be designed for 250 *PSI* working pressure and tested to 500 *PSI* hydrostatic pressure.
4. Hydrant shall be rated for 250 *PSI*. **FM** working pressure and 200 *PSI*. **ULC** working pressure.
5. Hydrant shall be a compression type, dry barrel design with centre operating stem construction.
6. The O-ring seating surface on the upper stem shall be constructed of stainless steel.
7. Epoxy coating to be applied to interior and exterior of hydrant shoe for corrosion protection.
8. Hydrant shall be manufactured with operating nut and integral thrust collar made of bronze. A Delrin washer bearing shall be located above thrust collar for ease of hydrant operation.
9. Hydrant shall have a lower valve assembly that fully encapsulates the lower operating rod threads. This allows for increased corrosion resistance and ease of disassembly.
10. Intermediate section shall be ductile iron. (AWWA C110 – 08)

STANDARD HYDRANT FEATURES

1. Body style: Round with 75mm (3") ANSI B16.1 Class 125 flange connection for monitor elbow.
2. 75mm (3") Class 125 FLG. ductile iron monitor elbow (AWWA C110 – 08)
3. Hydrant shall have an internally lubricated bronze operating nut with O-ring seals. Operating nut shall be of the Hydra-lube™ design to ensure self lubrication during operation.
4. Hydrant hose nozzles shall be mechanically locked into place by an external allen screw, and have O-ring seals.
5. Hydrant Lower rod shall be 1-1/4" in sq.
6. Hydrant shall have a main valve opening of 5-1/4".
7. Hydrant shall be a traffic model, complete with safety flanges and stem coupling. Upper body can be rotated 360 degrees to adjust pumper / monitor elbow direction.
8. Hydrant shall be manufactured with a lower valve plate that bottoms out in the shoe for maximum opening.
9. Hydrant shall be backed by manufacturer's 12 year limited warranty
10. Hydrant shall be the Clow Canada Brigadier as manufactured by Clow Canada.

McAvity

CLOW

CONCORD

A division of Canada Pipe Company Ltd.

OPTIONAL HYDRANT FEATURES

1. 2hose with monitor **or** 2hose & one pumper with monitor upper body
2. AVAILABLE INLETS:
 - 150mm (6") Mechanical Joint (ANSI A-21.11)
 - 150mm (6") Online chamber flanged (ANSI B16.1 Class 125) for (AWWA C110 – 08) tee
 - 200mm (8") Mechanical Joint (ANSI A-21.11)
 - 200mm (8") Online chamber flanged (ANSI B16.1 Class 125) for (AWWA C110 – 08) tee
 - 150mm (6") flanged (ANSI B16.1 Class 125)
 - 150mm (6") flanged (ANSI B16.1 Class 250)
 - 150mm (6") Tyton (AWWA C111/A21.11)

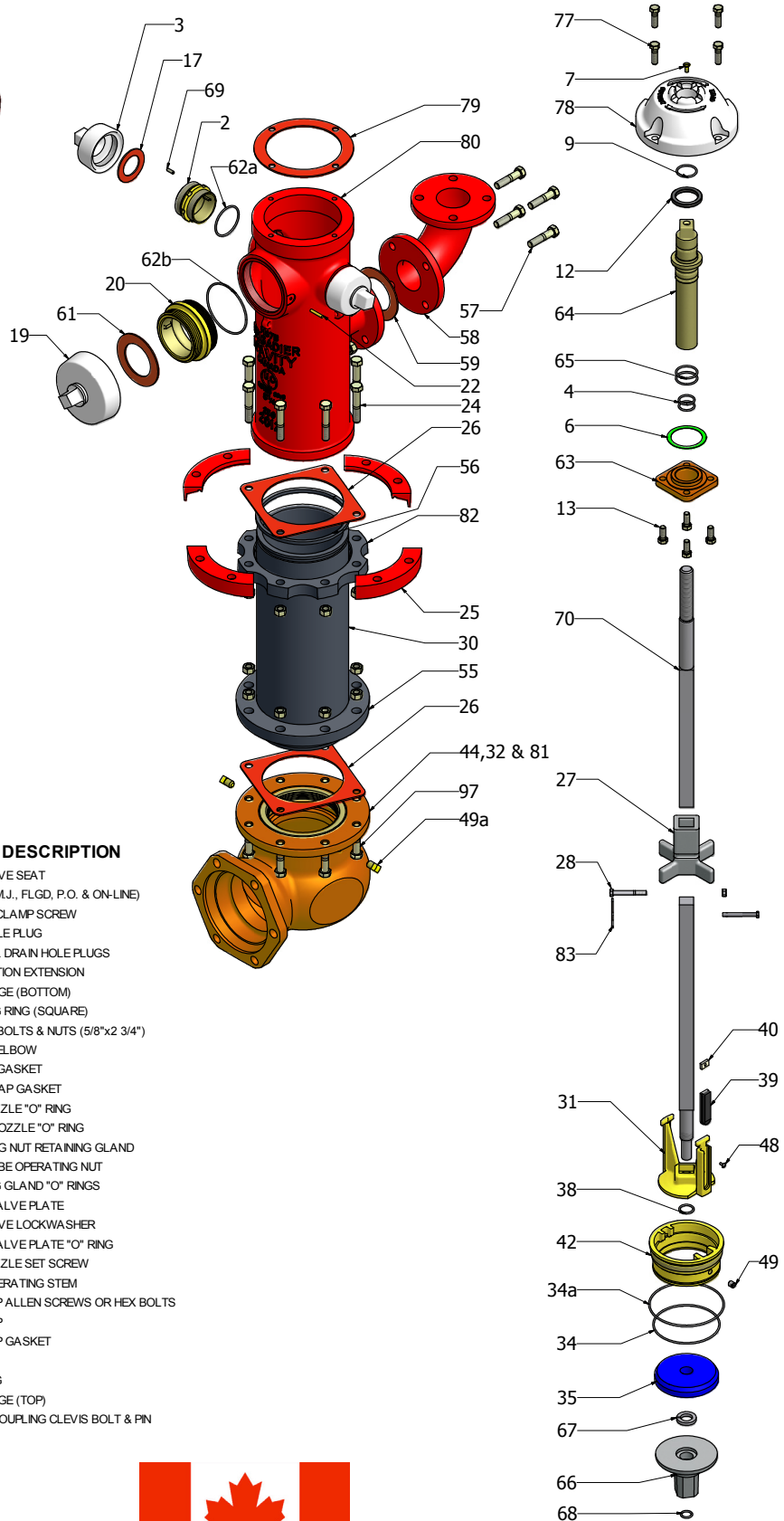
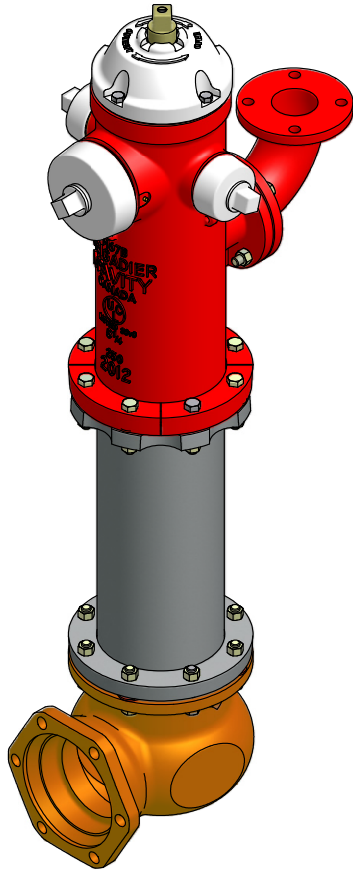
3. All standard inlets available in CAST IRON ASTM A126 Class B
Or Ductile Iron ASTM A536 (65-45-12)
4. Hydra-lube operating nut – see standard shapes on submittal drawing
5. Two 65mm (2.5") hose nozzles - threads on nozzle ends to suit national, provincial or municipal standard or STORZ quick connect
6. One 114mm (4.5") pumper nozzle - threads on nozzle ends to suit national, provincial or municipal standard
7. 100mm (4") or 125mm (5") STORZ quick connect pumper nozzle.
8. Nozzle caps to suit – see standard shapes on submittal drawing.
9. Two external .375" NPT plugs in inlet @ 180 degrees / one internal .25" NPT plug

10. Hose & pumper nozzle cap chains
11. Hydrants painted / coated to suit national, provincial or municipal standard per AWWA C502 / AWWA C550

McAvity

CLOW
A division of Canada Pipe Company Ltd.

CONCORD



DESCRIPTION

- 2 HOSE NOZZLE
- 3 HOSE NOZZLE CAP
- 4 HOUSING STEM "O" RINGS
- 5 HOSE CAP CHAIN & "S" HOOK
- 6 HOUSING JOINT GASKET
- 7 OIL HOLE SCREW
- 9 OPERATING NUT "O" RING
- 12 OPERATING NUT BEARING
- 13 CAP SCREW 1/2" x 1 1/4"(RET. GLD. BOLTS)
- 17 HOSE CAP GASKET
- 19 PUMPER CAP
- 20 PUMPER NOZZLE
- 21 PUMPER CAP CHAIN & S HOOK
- 22 PUMPER NOZZLE PIN
- 24 INTERSECTION BOLTS & NUTS
- 25 SAFETY FLANGE SEGMENTS
- 26 INTERSECTION GASKET
- 27 SAFETY COUPLING
- 28 SAFETY COUPLING BOLT & NUT (3/8"x3")
- 29 LOWER OPERATING STEM
- 30 INTERMEDIATE SECTION
- 31 DRIP VALVE
- 32* DRAIN HOLE LINING
- 34a MAIN VALVE SEAT "O" RING (UPPER)
- 34 MAIN VALVE SEAT "O" RING (LOWER)
- 35 MAIN VALVE DISC
- 38 MAIN VALVE "O" RING
- 39 DRIP VALVE RUBBER
- 40 HOLDING CLAMP

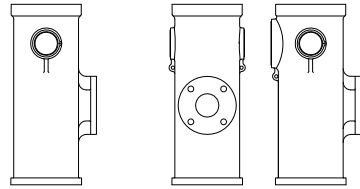
DESCRIPTION

- 42 MAIN VALVE SEAT
- 44* ELBOW (M.J., FLGD, P.O. & ON-LINE)
- 48 HOLDING CLAMP SCREW
- 49 DRAIN HOLE PLUG
- 49a EXTERNAL DRAIN HOLE PLUGS
- 50 INTERSECTION EXTENSION
- 55 PIPE FLANGE (BOTTOM)
- 56 RETAINING RING (SQUARE)
- 57 MONITOR BOLTS & NUTS (5/8"x2 3/4")
- 58 MONITOR ELBOW
- 59 MONITOR GASKET
- 61 PUMPER CAP GASKET
- 62a HOSE NOZZLE "O" RING
- 62b PUMPER NOZZLE "O" RING
- 63 OPERATING NUT RETAINING GLAND
- 64 HYDRALUBE OPERATING NUT
- 65 RETAINING GLAND "O" RINGS
- 66 LOWER VALVE PLATE
- 67 MAIN VALVE LOCKWASHER
- 68 LOWER VALVE PLATE "O" RING
- 69 HOSE NOZZLE SET SCREW
- 70 UPPER OPERATING STEM
- 77 BODY CAP ALLEN SCREWS OR HEX BOLTS
- 78 BODY CAP
- 79 BODY CAP GASKET
- 80 BODY
- 81* SEAT RING
- 82 PIPE FLANGE (TOP)
- 83 SAFETY COUPLING CLEVIS BOLT & PIN



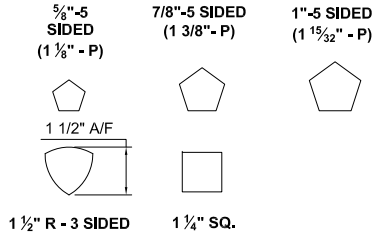
CLOW CANADA - M67B BRIGADIER MONITOR HYDRANT - 250 PSI FM APPROVED

HYDRANT BODY STYLES

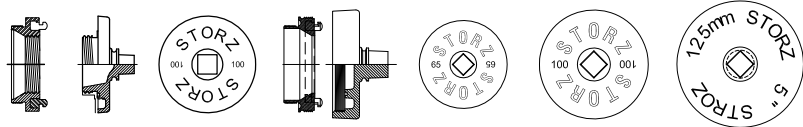


2 HOSE + MONITOR BODY

2 HOSE 1 PUMPER + MONITOR BODY



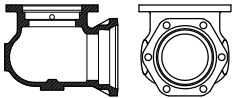
AVAILABLE OPERATING NUTS



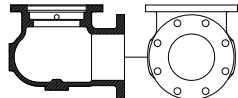
STORZ OPTIONS

STORZ 65mm HOSE NOZZLE, STORZ 100mm PUMPER NOZZLE, STORZ 125mm PUMPER NOZZLE & STORZ 100mm 316 STAINLESS STEEL

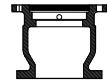
AVAILABLE HYDRANT END CONNECTIONS



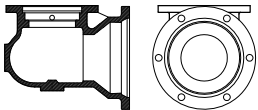
6" M.J. CAST IRON ELBOW



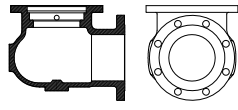
6" FLANGED CAST IRON ELBOW



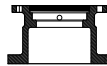
6" CAST IRON ON-LINE CHAMBER



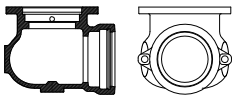
8" M.J. CAST IRON ELBOW



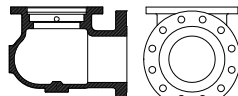
6" 150 LB FLANGED DUCTILE IRON RAISED FACE ELBOW



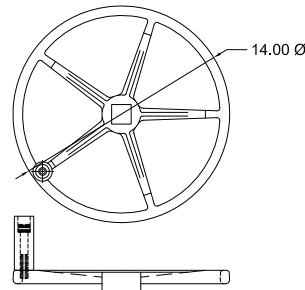
8" CAST IRON ON-LINE CHAMBER



6" PUSH-ON CAST IRON ELBOW

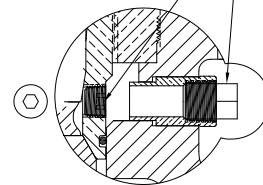


6" 250 LB FLANGED DUCTILE IRON RAISED FACE ELBOW



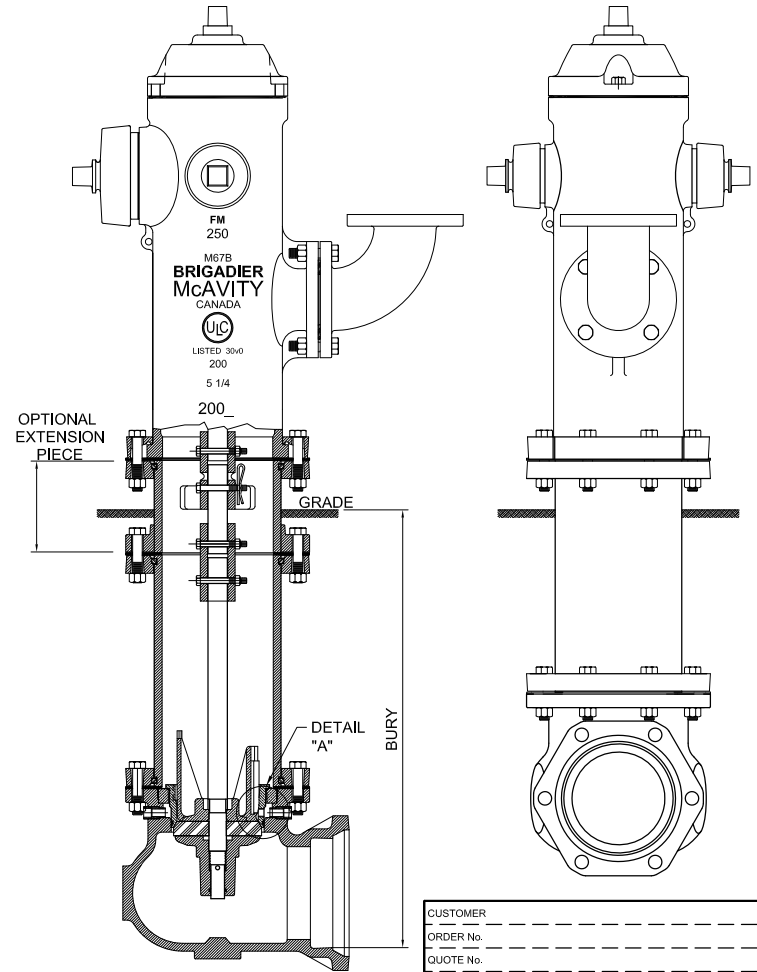
OPTIONAL HANDWHEEL & SPINNER

PERMANENT 3/8" SQUARE HEAD BRASS PIPE PLUG (2) FACTORY INSTALLED
REMOVABLE / INSERTABLE 1/4" NPT BRASS PLUG



METHOD OF PLUGGING DRAIN HOLE IN MAIN VALVE SEAT / INLET

DETAIL "A"



CUSTOMER	-----
ORDER No.	-----
QUOTE No.	-----
JOB	-----
M67B/M93B "BRIGADIER" COMPRESSION TYPE MONITOR HYDRANT WITH BOLTED BODY CAP	
CLOW CANADA	
JULY 2013	DWG. No. McM-551506

CLOW CANADA
M67B MONITOR HYDRANT

REF	DESCRIPTION	MATERIAL
2	HOSE NOZZLE	COPPER ALLOY
3	HOSE NOZZLE CAP	CAST IRON
4	HOUSING STEM "O" RINGS	BUNA - N
5	HOSE CAP CHAIN & "S" HOOK	STEEL Z.P.
6	HOUSING JOINT GASKET	COMPRESSED NON-ASBESTOS
7	OIL HOLE SCREW	BRASS
9	OPERATING NUT "O" RING	BUNA - N
12	OPERATING NUT BEARING	DELTRIN
13	CAP SCREW 1/2" x 1 1/4"(RET. GLD. BOLTS)	STEEL Z.P.
17	HOSE CAP GASKET	RED RUBBER
19	PUMPER CAP	CAST IRON
20	PUMPER NOZZLE	COPPER ALLOY
21	PUMPER CAP CHAIN & S HOOK	STEEL Z.P.
22	PUMPER NOZZLE PIN	BRASS
24	INTERSECTION BOLTS & NUTS	STEEL Z.P. / 18-8 SS
25	SAFETY FLANGE SEGMENTS	CAST IRON
26	INTERSECTION GASKET	RED RUBBER
27	SAFETY COUPLING	CAST IRON
28	SAFETY COUPLING BOLT & NUT (3/8"x3")	STEEL Z.P.
29	LOWER OPERATING STEM	STEEL Z.P.
30	INTERMEDIATE SECTION	DUCTILE IRON
31	DRIP VALVE	COPPER ALLOY
32*	DRAIN HOLE LINING	BRASS
34a	MAIN VALVE SEAT "O" RING (UPPER)	BUNA - N
34	MAIN VALVE SEAT "O" RING (LOWER))	BUNA - N
35	MAIN VALVE DISC	RUBBER or POLYURETHANE
38	MAIN VALVE "O" RING	BUNA - N
39	DRIP VALVE RUBBER	RUBBER
40	HOLDING CLAMP	PLASTIC
42	MAIN VALVE SEAT	COPPER ALLOY
44*	ELBOW (M.J., FLGD, P.O. & ON-LINE)	CAST IRON
48	HOLDING CLAMP SCREW	BRASS
49	DRAIN HOLE PLUG	BRASS
50	INTERSECTION EXTENSION	DUCTILE IRON
51	EXTENSION STEM	STEEL
52	ALIGNMENT COUPLING	CAST IRON
53	EXTENSION BOLTS & NUTS	STEEL Z.P.
55	PIPE FLANGE (BOTTOM)	CAST IRON
56	RETAINING RING (SQUARE)	STEEL Z.P.
57	MONITOR BOLTS & NUTS (5/8"x2 3/4")	STEEL Z.P. / 18-8 SS
58	MONITOR ELBOW	CAST IRON
59	MONITOR GASKET	RED RUBBER
61	PUMPER CAP GASKET	RED RUBBER
62a	HOSE NOZZLE "O" RING	BUNA - N
62b	PUMPER NOZZLE "O" RING	BUNA - N
63	OPERATING NUT RETAINING GLAND	CAST IRON
64	HYDRALUBE OPERATING NUT	COPPER ALLOY
65	RETAINING GLAND "O" RINGS	BUNA - N
66	LOWER VALVE PLATE	CAST IRON
67	MAIN VALVE LOCKWASHER	18-8 STAINLESS STEEL
68	LOWER VALVE PLATE "O" RING	BUNA - N
69	HOSE NOZZLE SET SCREW	18-8 STAINLESS STEEL
70	UPPER OPERATING STEM	416 MX ST. STL.
77	BODY CAP ALLENSCREWS OR HEX BOLTS	18-8 STAINLESS STEEL
78	BODY CAP	CAST IRON
79	BODY CAP GASKET	RED RUBBER
80	BODY	CAST IRON
81*	SEAT RING	COPPER ALLOY
82	PIPE FLANGE (TOP)	CAST IRON
83	SAFETY COUPLING CLEVIS BOLT & PIN	STEEL Z.P.
84	HANDWHEEL	CAST IRON
85	1/2"x3" BOLT W/SPINNER	18-8 STAINLESS STEEL
93	5/16"x1" HEX BOLT	STEEL Z.P. / 18-8 SS
97	11/32"x1 1/2" FLAT WASHER	STEEL Z.P. / 18-8 SS

*** PERMANENTLY ASSEMBLED PARTS SUPPLIED WITH ELBOW Ref. No. 44 / ** SUPPLIED
AS ASSEMBLY ONLY**