

# CLOW CANADA

## 50mm - 300mm R/W NRS INDICATOR POST VALVE (all styles) MATERIAL LIST

PROJECT

OWNER

CONTRACTOR

DISTRIBUTOR

CONSULTANT

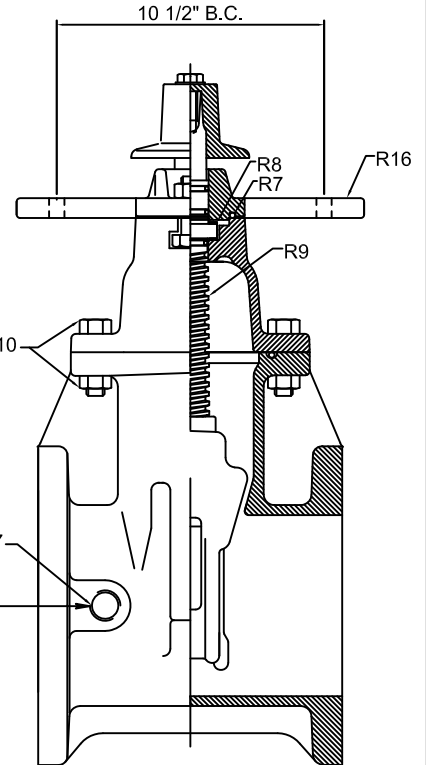
CLOW MODEL 2639 - AWWA C509 - FULL WALL DUCTILE IRON

CLOW MODEL 2640 - AWWA C509 - FULL WALL CAST IRON

ITEM	DESCRIPTION	MATERIAL	ASTM SPEC.
R1	Hold Down Bolt	Stainless Steel	ASTM F 593
R2	Bolt Washer	Stainless Steel	ASTM F 593
R3	Operating Nut or Handwheel	Cast Iron	ASTM A126 Cl B
R4	Follower Plate Bolts & Nuts	Stainless Steel	ASTM F 593
R5	Follower Plate	Cast Iron	ASTM A126 Cl B
R6	Stem O Ring	Rubber	D2000
R7	Follower Plate O Ring	Rubber	D2000
R8	Thrust Washer	Delrin	
R9	Stem O/L or O/R	Bronze	ASTM B584 C86700
R10	Cover Bolts & Nuts	Stainless Steel	ASTM F 593
R11	Cover	Cast Iron/Ductile	ASTM 126-B/A536
R12	Stem Nut O/L or O/R	Bronze	ASTM B584 C83600
R13	Wedge	Gray Iron & SBR/Ductile SBR	ASTM A126-B/A536
R14	Cover O Ring	Rubber	D2000
R15	Body - all types	Cast Iron or Ductile Iron	ASTM A126-B/A536
R16	Indicator Post Adpter Plate	Cast Iron	ASTM A126 Cl B
R17	Pipe Plug (Optional Some Styles)	Stainless Steel	ANSI 304



F-6100 M.J. PIV SHOWN



F-6102 FLG PIV SHOWN



**APPLICATIONS**  
FIRE WATER  
POTABLE WATER



FIGURE #	AVAILABLE GATE VALVE END CONNECTIONS	SIZE
F-6102	FLG END (NRS) (ANSI B16.1 CLASS 125)	3" - 12"
F-6100	M.J. (ANSI A-21.11)	3" - 12"
F-6106	FLG x M.J.	3" - 12"
F-6110	PUSH-ON for PVC (SDR) (AWWA C111/A21.11)	3" - 12"
F-6114	M.J. for TAPPING (ANSI A-21.11) x (MSS STANDARD PRACTICE SP-60)	3" - 12"
F-6115	TYTON for TAPPING	4" - 12"
F-6111	M.J. CUTTING-IN 4"-12"	4" - 12"
F-6113	TYTON for D.I. x FLG	4" - 12"

R17  
STD. TAP SIZE  
1/2" for 3"-4"  
3/4" for 6"-12"  
OPTIONAL

**TEST DATA**

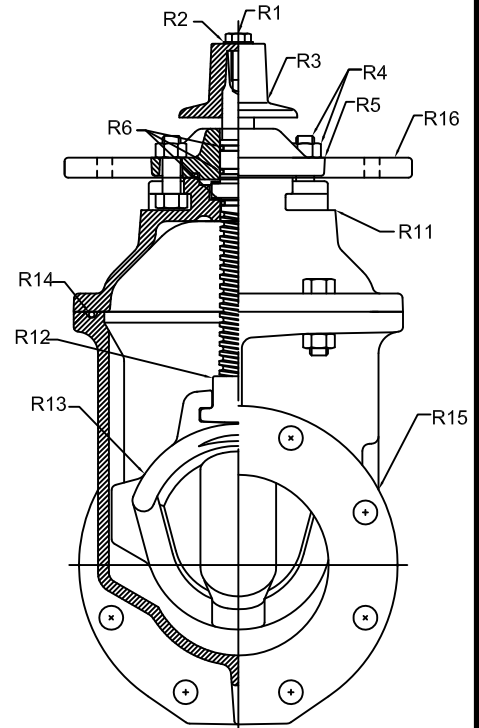
SIZE RANGE	RATED WORKING WATER PRESSURE PSI	BUBBLE TIGHT	HYDROSTATIC SHELL TEST PSI
AWWA 2" - 12"	250	250	500
UL/FM 2 1/2" - 12"	200	200	400

**CERTIFICATIONS**

Complies with the **FM** standard for **FIRE SERVICE CONTROL VALVES**  
**Complies with Underwriters Laboratory standard UL 262 & UL Canada 312**  
 Electrostatically applied Epoxy Coating per **AWWA C550** complies with **NSF 61, Inside & Out**  
 Indicator Post Valves comply with **NFPA 24** standards  
**NSF/ANSI 372 COMPLIANT** - DRINKING WATER SYSTEMS COMPONENTS - LEAD CONTENT  
 80% - 90% RECYCLED CONTENT as defined by **LEED - New Construction and Major Renovation version 2.2**

**PHYSICAL PROPERTIES**

Temperature range - 32 to 125 degrees Fahrenheit / 0 to 52 degrees Celsius  
 250 PSI / 17.2 bar non - shock cold working pressure  
 100% full port - smooth waterway no pockets or cavities  
 Valve has been cycle tested 5,000 times without loss of bubble-tight seal  
 Valve has been subjected to torques 150% of the designated minimum required torques



F-6102 FLG PIV SHOWN

# CLOW CANADA

50 - 300 R/W VALVE NRS M.J. ENDS  
GENERAL DIMENSIONS

PROJECT

OWNER

CONTRACTOR

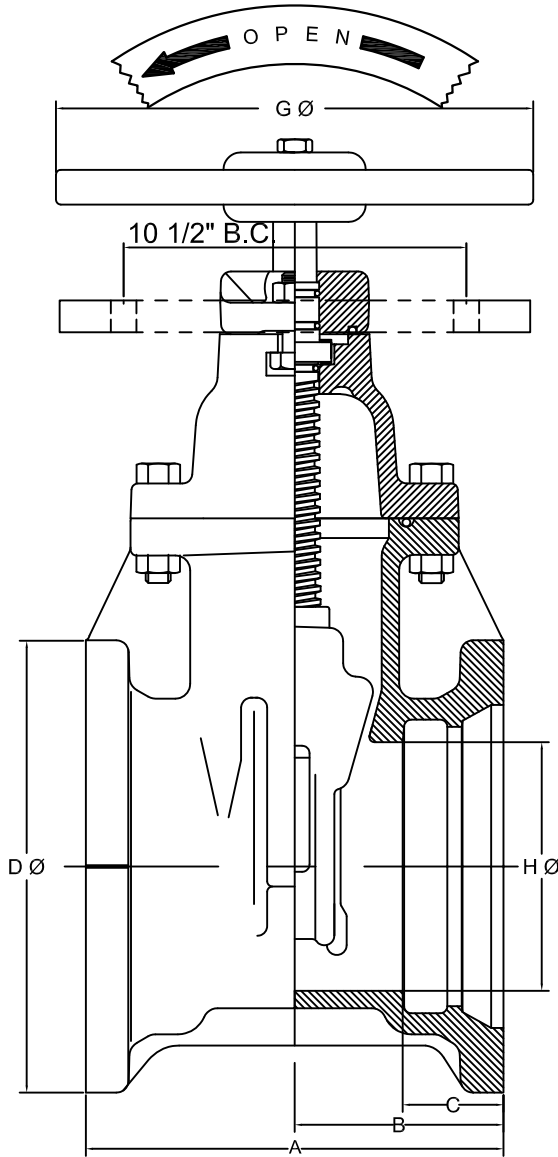
DISTRIBUTOR

CONSULTANT

CLOW FIGURE F6100

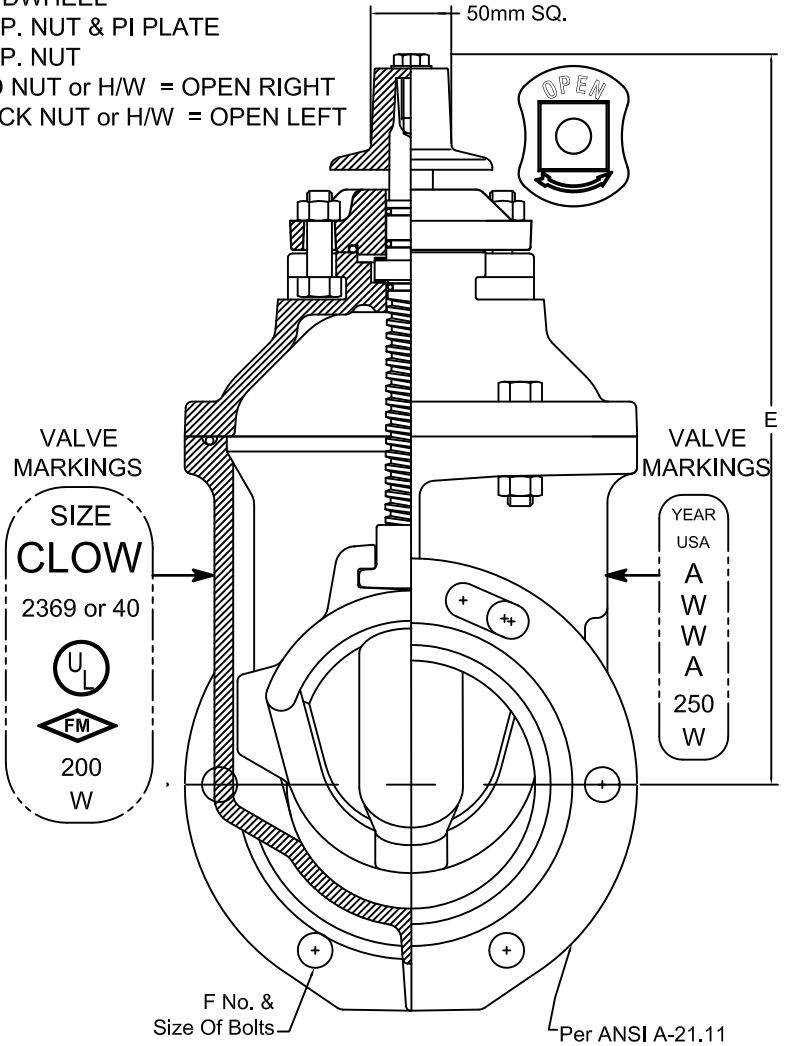
CLOW MODEL 2640 AWWA C509 FULL WALL CAST IRON

CLOW MODEL 2639 AWWA C509 FULL WALL DUCTILE IRON



**OPTIONAL**

- 1) HANDWHEEL
- 2) 2" OP. NUT & PI PLATE
- 3) 2" OP. NUT
- 4) RED NUT or H/W = OPEN RIGHT
- 5) BLACK NUT or H/W = OPEN LEFT



**METRIC DIMENSIONS**

VALVE SIZE	A	B	C	D	E	F	G	H	NUMBER OF TURNS	WEIGHT W/2" NUT	WEIGHT W/ HW	WEIGHT PI PLATE
50	210	105	62.5	115	275	4 -5/8"	185	50	6 1/2	—	—	—
62.5	—	—	—	—	—	—	—	—	—	—	—	—
75	215	108	62.5	195	315	4 -5/8"	250	75	10	—	—	—
100	240	120	62.5	230	375	4 -3/4"	250	110	13 1/2	87 lbs	93 lbs	103 lbs
150	265	130	62.5	290	480	6 -3/4"	300	160	19 1/2	136 lbs	145 lbs	152 lbs
200	335	165	62.5	350	572	6 -3/4"	350	210	25 1/2	206 lbs	218 lbs	222 lbs
250	395	195	62.5	400	670	8 -3/4"	450	260	31 1/2	352 lbs	371 lbs	368 lbs
300	405	200	67	455	760	8 -3/4"	450	310	37 3/4	480 lbs	500 lbs	496 lbs

# CLOW CANADA

50 - 300 R/W VALVE NRS FLANGED ENDS  
GENERAL DIMENSIONS

PROJECT

OWNER

CONTRACTOR

DISTRIBUTOR

CONSULTANT

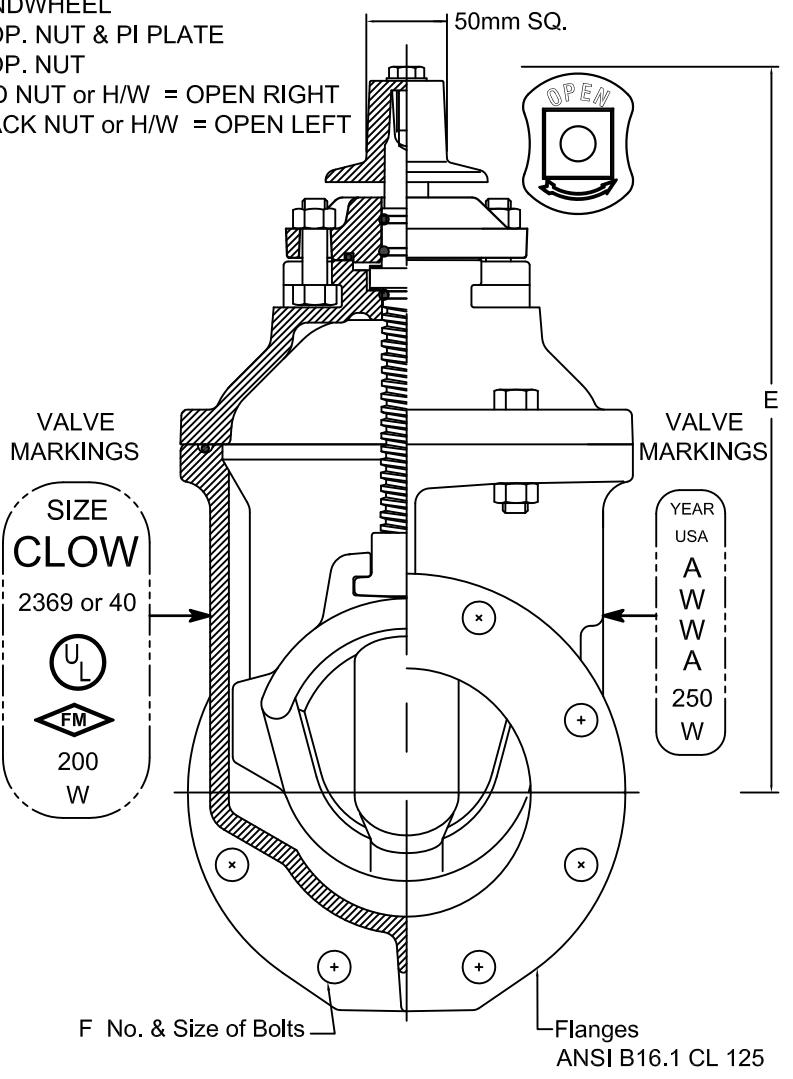
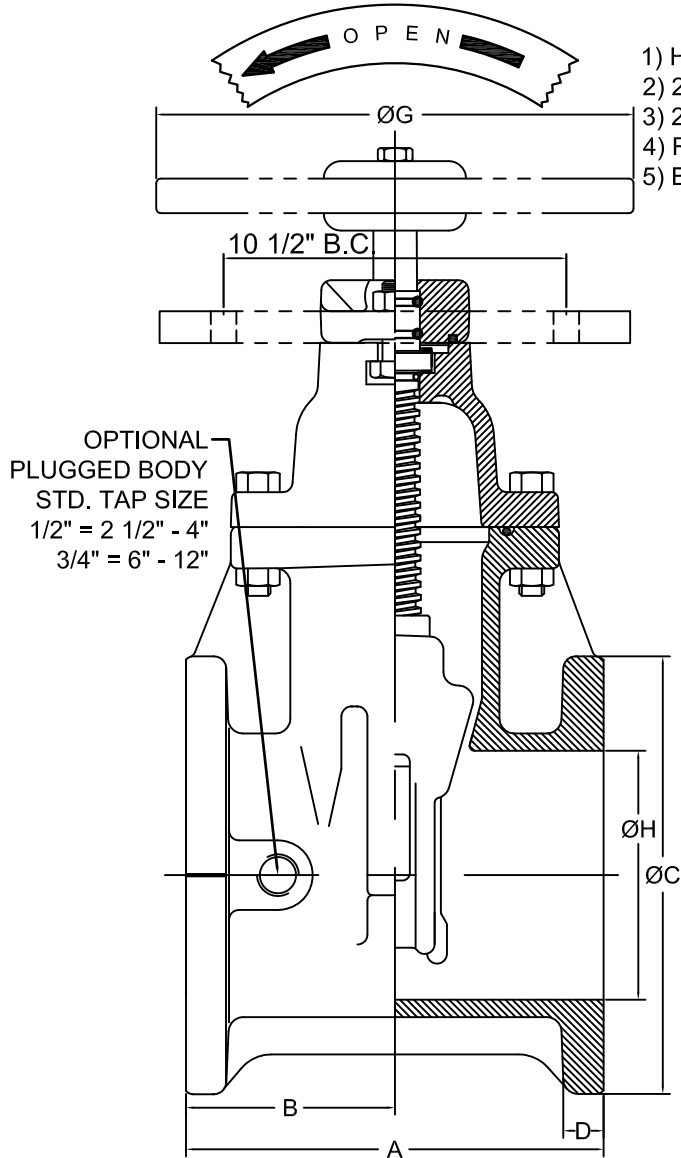
CLOW FIGURE F6102

CLOW MODEL 2640 AWWA C509 FULL WALL CAST IRON

CLOW MODEL 2639 AWWA C509 FULL WALL DUCTILE IRON

**OPTIONAL**

- 1) HANDWHEEL
- 2) 2" OP. NUT & PI PLATE
- 3) 2" OP. NUT
- 4) RED NUT or H/W = OPEN RIGHT
- 5) BLACK NUT or H/W = OPEN LEFT



METRIC DIMENSIONS									NUMBER OF TURNS	WEIGHT W/2" NUT	WEIGHT W/ HW	WEIGHT PI PLATE
VALVE SIZE	A	B	C	D	E	F	G	H				
50	180	90	150	16	275	4-5/8	185	50	6 1/2	39 lbs	43 lbs	N/A
62.5	190	95	180	18	290	4-5/8	185	62.5	8	51 lbs	56 lbs	N/A
75	200	100	190	19	315	4-5/8	250	75	10	62 lbs	68 lbs	78 lbs
100	230	115	230	23	375	8-5/8	250	108	13 1/2	87 lbs	93 lbs	103 lbs
150	265	130	280	25	480	8-3/4	300	160	19 1/2	134 lbs	143 lbs	150 lbs
200	290	145	340	28	570	8-3/4	350	210	25 1/2	212 lbs	224 lbs	228 lbs
250	330	165	400	30	670	12-7/8	450	260	31 1/2	369 lbs	388 lbs	385 lbs
300	350	180	480	32	750	12-7/8	450	310	37 3/4	523 lbs	542 lbs	539 lbs

# CLOW CANADA

75 - 300 R/W VALVE NRS  
 FLANGED x MECHANICAL JOINT ENDS  
 GENERAL DIMENSIONS

PROJECT

OWNER

CONTRACTOR

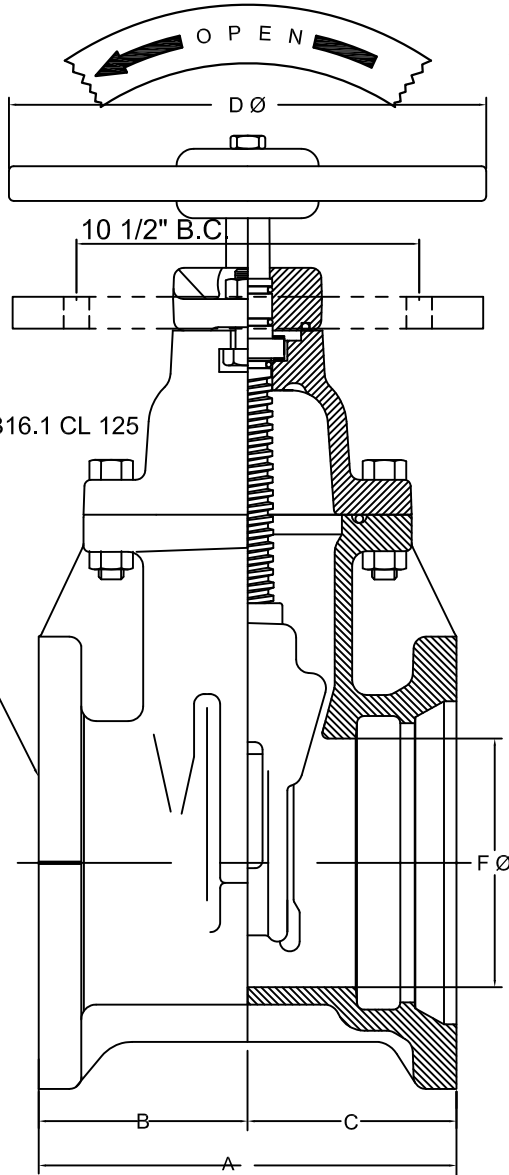
DISTRIBUTOR

CONSULTANT

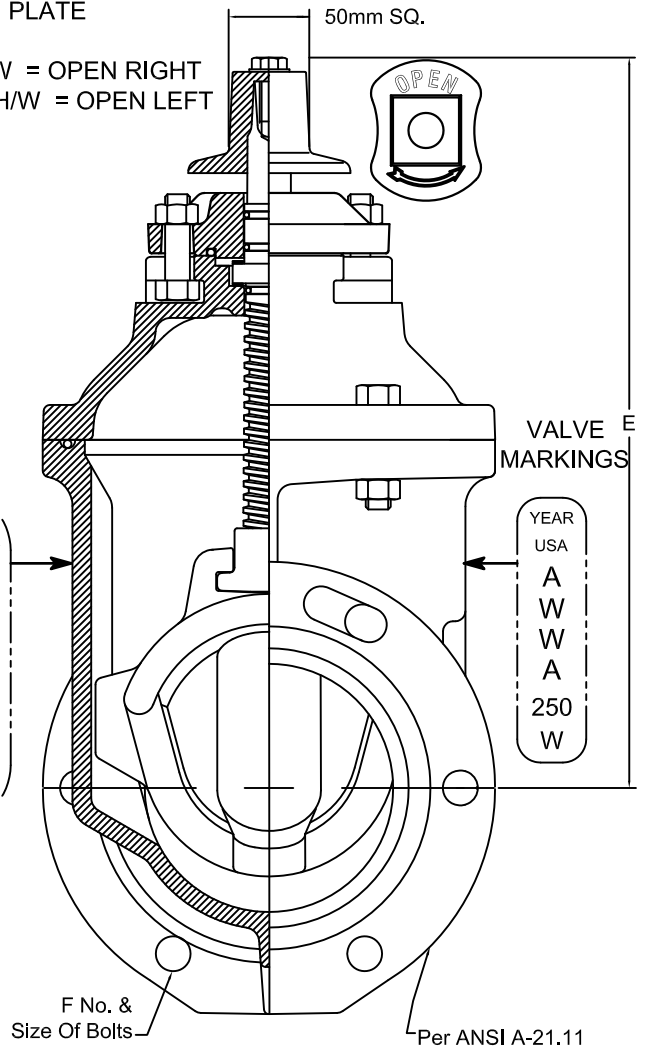
**CLOW FIGURE F6106**

CLOW MODEL 2640 AWWA C509 FULL WALL CAST IRON

CLOW MODEL 2639 AWWA C509 FULL WALL DUCTILE IRON



- OPTIONAL**
- 1) HANDWHEEL
  - 2) 2" OP. NUT & PI PLATE
  - 3) 2" OP. NUT
  - 4) RED NUT or H/W = OPEN RIGHT
  - 5) BLACK NUT or H/W = OPEN LEFT



Per ANSI B16.1 CL 125

VALVE MARKINGS

VALVE MARKINGS



METRIC DIMENSIONS							NUMBER OF TURNS	WEIGHT W/2" NUT	WEIGHT W/ HW	WEIGHT PI PLATE
VALVE SIZE	A	B	C	D	E	F				
75	210	100	108	250	315	75	10	—	—	—
100	235	115	120	250	375	108	13 1/2	86 lbs	93 lbs	102 lbs
150	265	133	133	300	480	160	19 1/2	140 lbs	149 lbs	156 lbs
200	313	145	165	350	570	210	25 1/2	210 lbs	222 lbs	226 lbs
250	362	165	195	450	675	260	31 1/2	358 lbs	377 lbs	374 lbs
300	380	175	200	450	760	310	37 3/4	436 lbs	455 lbs	452 lbs

# CLOW CANADA

100mm - 300mm R/W VALVE TYTON ENDS  
NRS GENERAL DIMENSIONS

PROJECT

OWNER

CONTRACTOR

DISTRIBUTOR

CONSULTANT

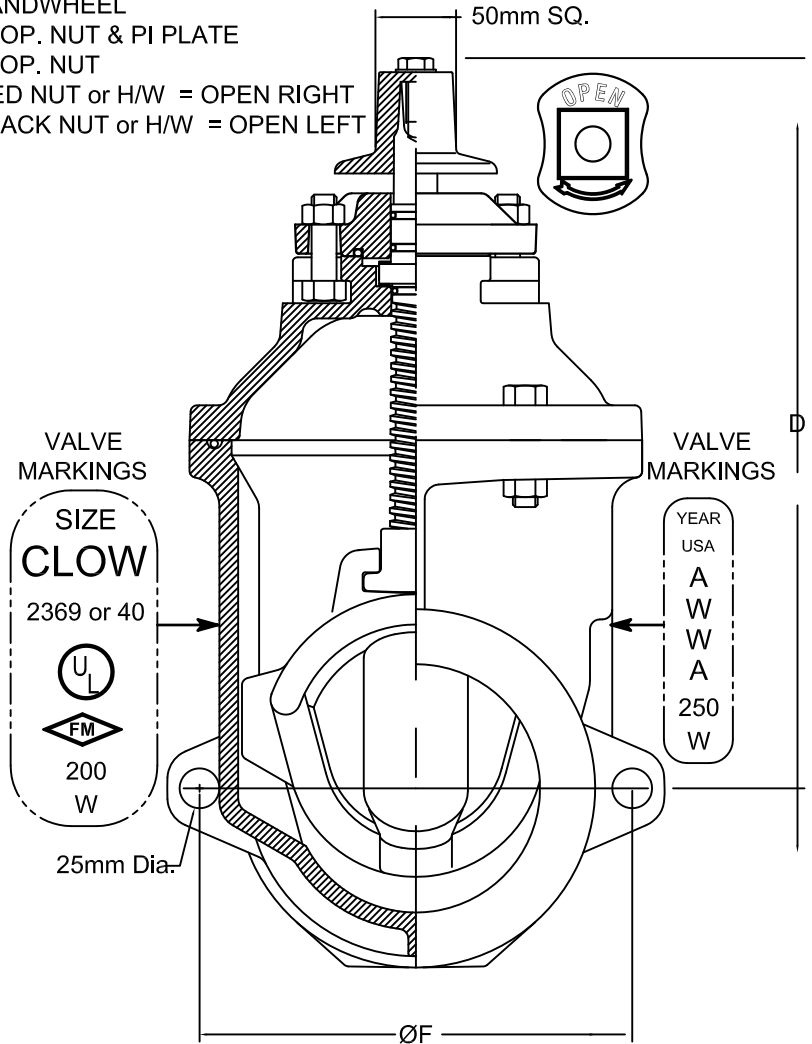
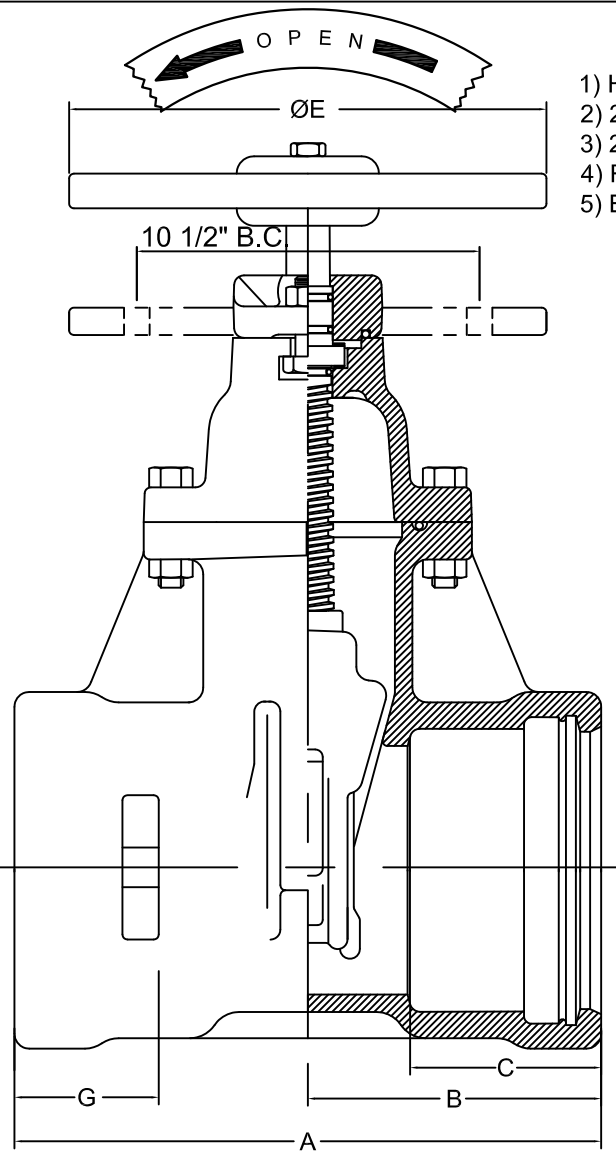
CLOW FIGURE F6112

CLOW MODEL 2640 AWWA C509 FULL WALL CAST IRON

CLOW MODEL 2639 AWWA C509 FULL WALL DUCTILE IRON

### OPTIONAL

- 1) HANDWHEEL
- 2) 2" OP. NUT & PI PLATE
- 3) 2" OP. NUT
- 4) RED NUT or H/W = OPEN RIGHT
- 5) BLACK NUT or H/W = OPEN LEFT



TYTON ENDS PER ANSI / AWWA C111 / A21.11



METRIC DIMENSIONS								NUMBER OF TURNS	WEIGHT W/2" NUT	WEIGHT W/ HW	WEIGHT PI PLATE
VALVE SIZE	A	B	C	D	E	F	G				
100	335	165	110	375	250	210	95	13 1/2	87 lbs	93 lbs	103 lbs
150	375	185	120	480	300	275	95	19 1/2	135 lbs	144 lbs	151 lbs
200	435	215	145	570	350	325	115	25 1/2	211 lbs	223 lbs	227 lbs
250	490	245	155	670	450	405	130	31 1/2	355 lbs	374 lbs	371 lbs
300	530	265	155	760	450	470	135	37 3/4	496 lbs	515 lbs	513 lbs

# CLOW CANADA

75 - 300 R/W VALVE NRS  
 FLANGED x TYTON JOINT ENDS  
 GENERAL DIMENSIONS

PROJECT

OWNER

CONTRACTOR

DISTRIBUTOR

CONSULTANT

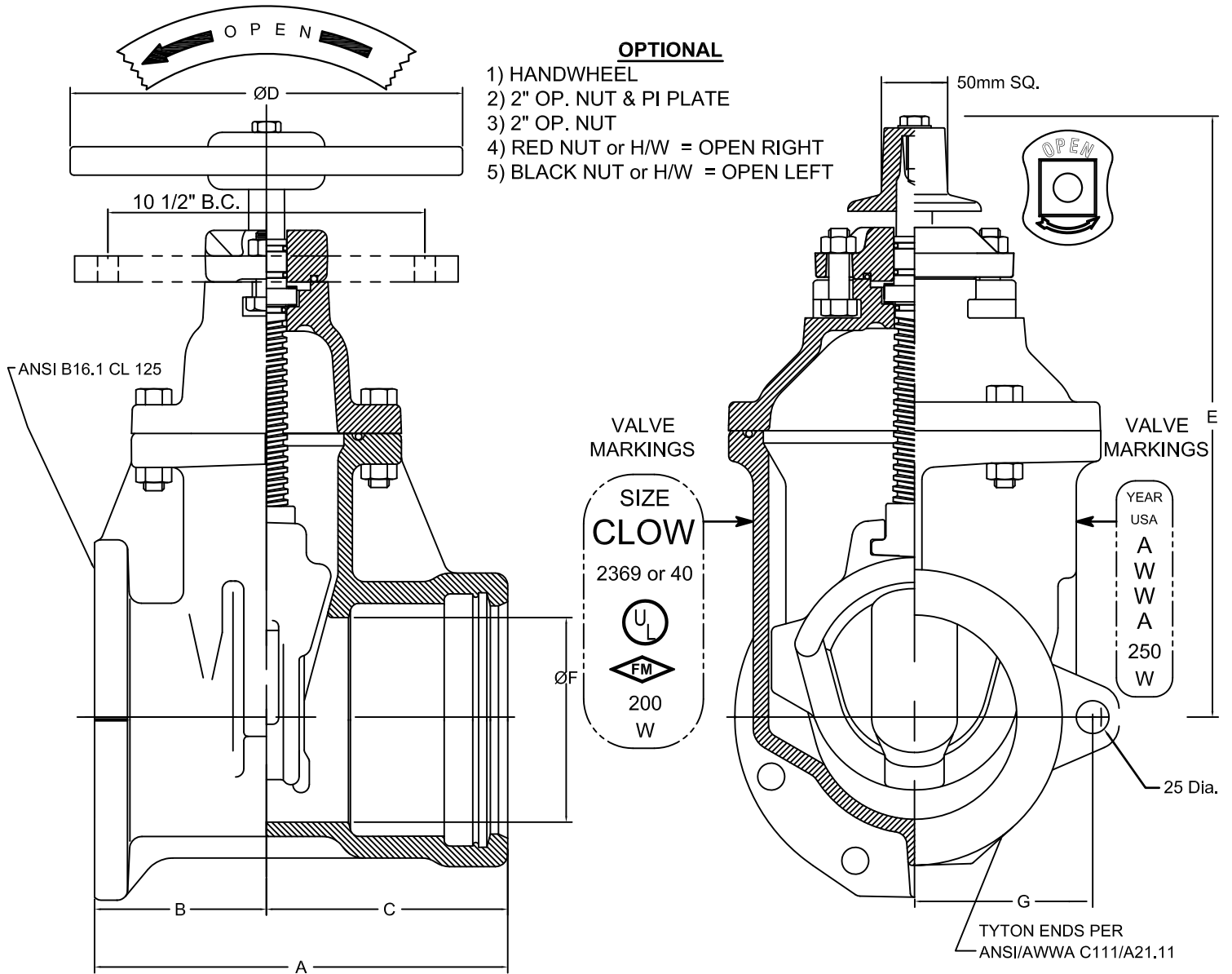
**CLOW FIGURE F6113**

CLOW MODEL 2640 AWWA C509 FULL WALL CAST IRON

CLOW MODEL 2639 AWWA C509 FULL WALL DUCTILE IRON

**OPTIONAL**

- 1) HANDWHEEL
- 2) 2" OP. NUT & PI PLATE
- 3) 2" OP. NUT
- 4) RED NUT or H/W = OPEN RIGHT
- 5) BLACK NUT or H/W = OPEN LEFT



VALVE SIZE	METRIC DIMENSIONS							NUMBER OF TURNS	WEIGHT W/2" NUT	WEIGHT W/ HW	WEIGHT PI PLATE
	A	B	C	D	E	F	G				
100	283	115	168	250	375	108	104	13 1/2	86 lbs	92 lbs	102 lbs
150	320	134	188	300	483	159	138	19 1/2	138 lbs	147 lbs	154 lbs
200	365	146	218	350	572	210	164	25 1/2	214 lbs	226 lbs	230 lbs
250	410	165	246	450	673	260	202	31 1/2	360 lbs	379 lbs	376 lbs
300	443	178	265	450	762	310	234	37 3/4	505 lbs	524 lbs	521 lbs

# CLOW CANADA

75 - 300 R/W VALVE NRS TAPP x M.J. ENDS  
GENERAL DIMENSIONS

PROJECT

OWNER

CONTRACTOR

DISTRIBUTOR

CONSULTANT

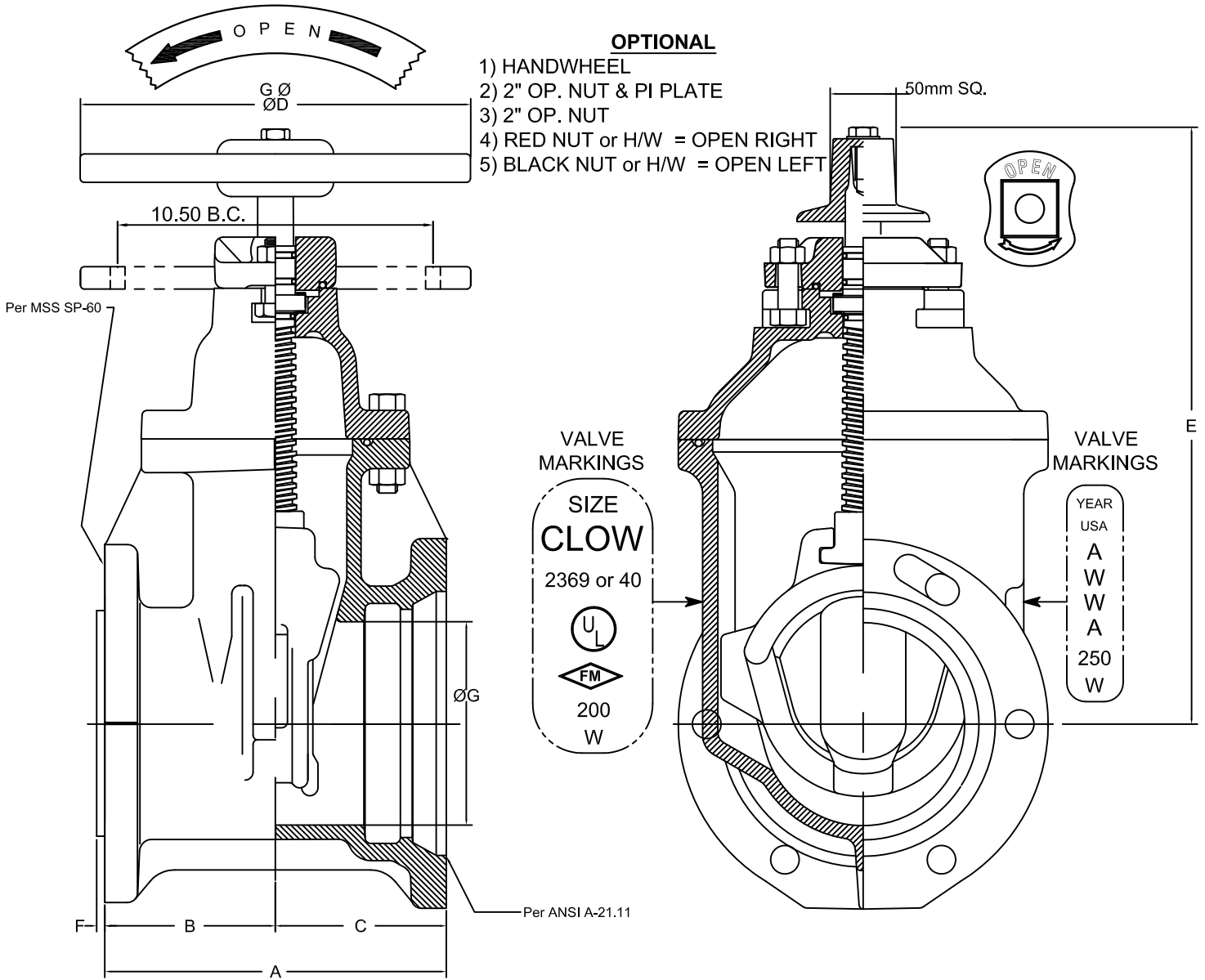
CLOW FIGURE F6114

CLOW MODEL 2640 AWWA C509 FULL WALL CAST IRON

CLOW MODEL 2639 AWWA C509 FULL WALL DUCTILE IRON

**OPTIONAL**

- 1) HANDWHEEL
- 2) 2" OP. NUT & PI PLATE
- 3) 2" OP. NUT
- 4) RED NUT or H/W = OPEN RIGHT
- 5) BLACK NUT or H/W = OPEN LEFT



METRIC DIMENSIONS								NUMBER OF TURNS	WEIGHT W/2" NUT	WEIGHT W/ HW	WEIGHT PI PLATE
VALVE SIZE	A	B	C	D	E	F	G				
75	210	100	108	250	315	6	75	10			
100	235	115	120	250	375	6	108	13 1/2	89 lbs	95 lbs	105 lbs
150	265	133	133	300	480	7	160	19 1/2	142 lbs	151 lbs	158 lbs
200	335	145	190	350	570	7	210	25 1/2	214 lbs	226 lbs	230 lbs
250	315	165	195	450	675	7	260	31 1/2	378 lbs	397 lbs	394 lbs
300	380	175	200	450	760	7	310	37 3/4	523 lbs	542 lbs	539 lbs

# CLOW CANADA

100 - 300 R/W VALVE NRS  
 TYTON x TAPPING ENDS  
 GENERAL DIMENSIONS

PROJECT

OWNER

CONTRACTOR

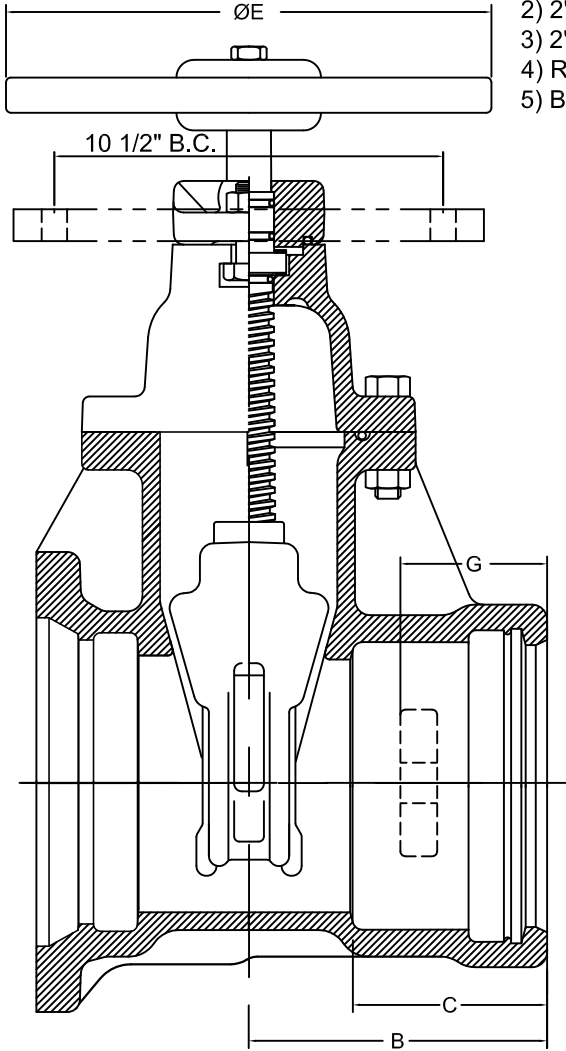
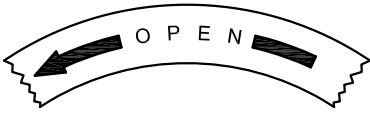
DISTRIBUTOR

CONSULTANT

**CLOW FIGURE F6115**

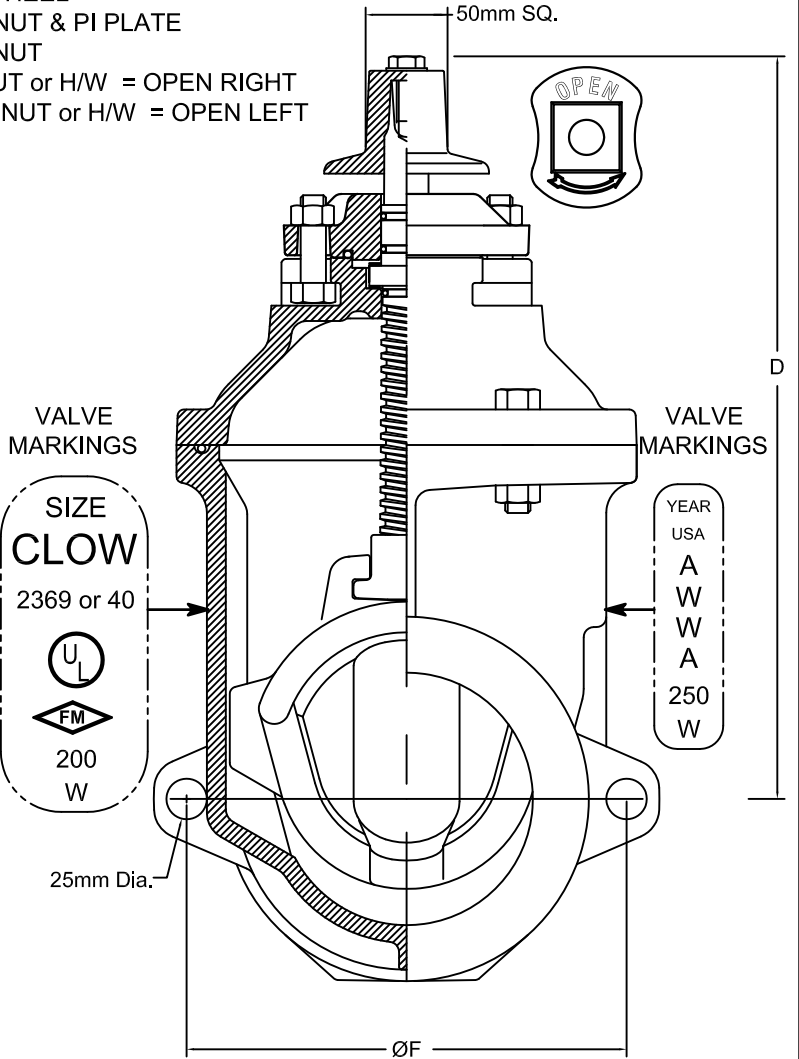
CLOW MODEL 2640 AWWA C509 FULL WALL CAST IRON

CLOW MODEL 2639 AWWA C509 FULL WALL DUCTILE IRON



**OPTIONAL**

- 1) HANDWHEEL
- 2) 2" OP. NUT & PI PLATE
- 3) 2" OP. NUT
- 4) RED NUT or H/W = OPEN RIGHT
- 5) BLACK NUT or H/W = OPEN LEFT



METRIC DIMENSIONS							NUMBER OF TURNS	WEIGHT W/2" NUT	WEIGHT W/ HW	WEIGHT PI PLATE
VALVE SIZE	B	C	D	E	F	G				
100	165	110	375	250	210	95	13 1/2	88 lbs	94 lbs	104 lbs
150	185	120	480	300	275	95	19 1/2	138 lbs	147 lbs	154 lbs
200	215	145	570	350	325	115	25 1/2	214 lbs	226 lbs	230 lbs
250	245	155	670	450	405	130	31 1/2	360 lbs	379 lbs	376 lbs
300	265	155	760	450	470	135	37 3/4	505 lbs	524 lbs	521 lbs