

# CLOW CANADA

## 350mm - 500mm RW INDICATOR POST GATE VALVE with SPUR GEAR or BEVEL GEAR all styles MATERIAL LIST

PROJECT

OWNER

CONTRACTOR

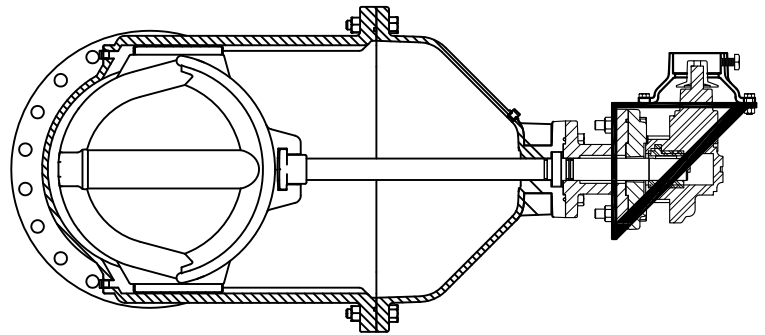
DISTRIBUTOR

CONSULTANT

CLOW MODEL 2638 - AWWA C515  
REDUCED WALL DUCTILE IRON

ITEM NO.	DESCRIPTION	MATERIAL	ASTM SPEC.
1	Body	Ductile Iron	ASTM A536 65-45-12
2	Cover	Ductile Iron	ASTM A536 65-45-12
3	Wedge	Ductile Iron/Rubber	ASTM A536 65-45-12 ASTM D-2000
4	Wedge Cap (18"-24" only)	Delrin	Delrin
5	Cover O ring	Rubber	ASTM D-2000
6	Stem O/L or O/R	Bronze	ASTM B584 C86700
7	Stem Nut	Bronze	ASTM B584 C86700
9	O ring	Rubber	ASTM D-2000
10	Cover Hex Head Bolt	Stainless Steel	ASTM F 593
11	Cover Hex Nut	Stainless Steel	ASTM F 593
12	Extension	Ductile Iron	ASTM A536 65-45-12
13	Lower Ext O ring	Rubber	ASTM D-2000
14	Follower Hex Head Bolt	Stainless Steel	ASTM F 593
15	Actuator - 3:1 (18-20") 2:1 (14-16")	As purchased	AWWA C515
16	Adaptor Plate	Ductile Iron	ASTM A536 65-45-12
17	Actuator Gasket	Rubber	ASTM D-2000
18	Socket Head Bolt	Alloy Steel	Alloy Steel
19	Upper Ext O ring	Rubber	ASTM D-2000
20	Adapter Plate Hex Bolt	Stainless Steel	ASTM F 593
21	Adapter Plate Hex Nut	Stainless Steel	ASTM F 593
22	Key	Steel	-----
23	Op Nut	Ductile Iron	ASTM A536 65-45-12
24	Pipe Plug - 1/2 NPT with square hd	Stainless Steel	AISI 304
28	Thrust Bearing (18"-20" only)	Delrin	Delrin
29	Track Pipe Plug	Stainless Steel	AISI 304

### OPTIONAL SPUR GEAR or BEVEL GEAR OPERATOR



**GATE VALVE WITH BEVEL GEAR ADAPTER PLATE  
FOR INDICATOR POST**

### APPLICATIONS FIRE WATER POTABLE WATER

**NOTES:**

All valves 18" diameter & larger are equipped with 3:1 gear operators  
Spur (vertical installation) or Bevel (horizontal)  
14 & 16" diameter valves are supplied with 2:1 gear operators by special  
request only  
All geared valves 14" diameter & larger are available with position  
indicators by special request.  
Geared gate valves are not ULC or FM approved

FIGURE #	AVAILABLE GATE VALVE END CONNECTIONS	SIZE
F-6100	M.J. (ANSI A-21.11)	14"- 20"
F-6102	FLG END (NRS) (ANSI B16.1 CLASS 125)	14"- 20"
F-6106	FLG x M.J.	14"- 20"
F-6112	Tyton for D.I. & C900 PVC (AWWA C111/A21.11)	14"- 16"

**TEST DATA**

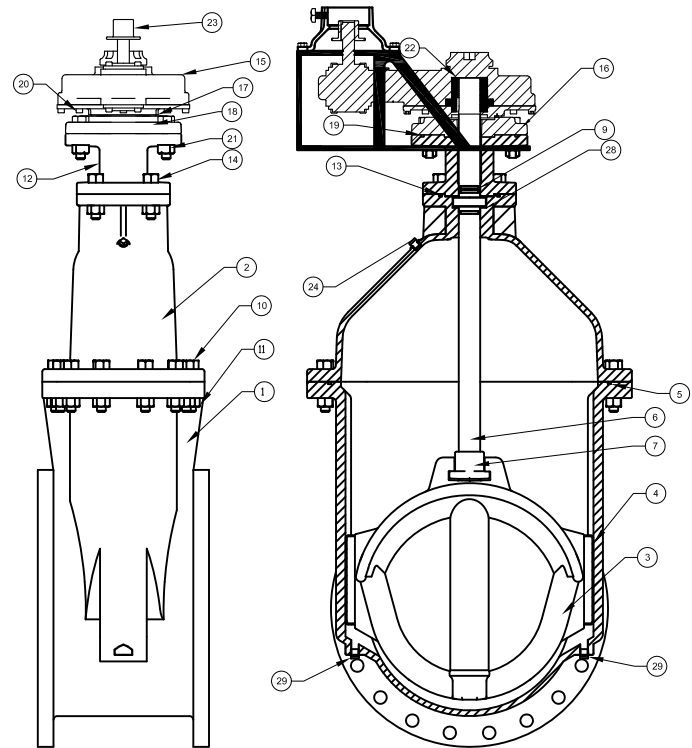
Size Range	Rated Working water pressure PSI	Bubble Tight test PSI	Hydrostatic Shell test PSI
AWWA 16" -20"	250	250	500

**CERTIFICATIONS**

Electrostatically applied Epoxy coating per **AWWA C550** complies with **NSF 61**  
**NSF/ANSI 372 COMPLIANT** -DRINKING WATER SYSTEMS  
COMPONENTS - LEAD CONTENT  
80 - 90% RECYCLED CONTENT as defined by **LEED -New**  
Construction and Major Renovation version 2.2

**PHYSICAL PROPERTIES**

Temperature range- 32 to 125 degrees Fahrenheit / 0 to 52 degrees Celsius  
250 PSI/17.2 bar non - shock cold working pressure  
100% full port - smooth waterway no pockets or cavities  
Valve has been cycle tested 5,000 times without loss of bubble-tight seal



**GATE VALVE WITH SPUR GEAR ADAPTER PLATE  
FOR INDICATOR POST**

# CLOW CANADA

350 - 500 R/W GV MJ END BEVEL GEAR  
GENERAL DIMENSIONS

PROJECT

OWNER

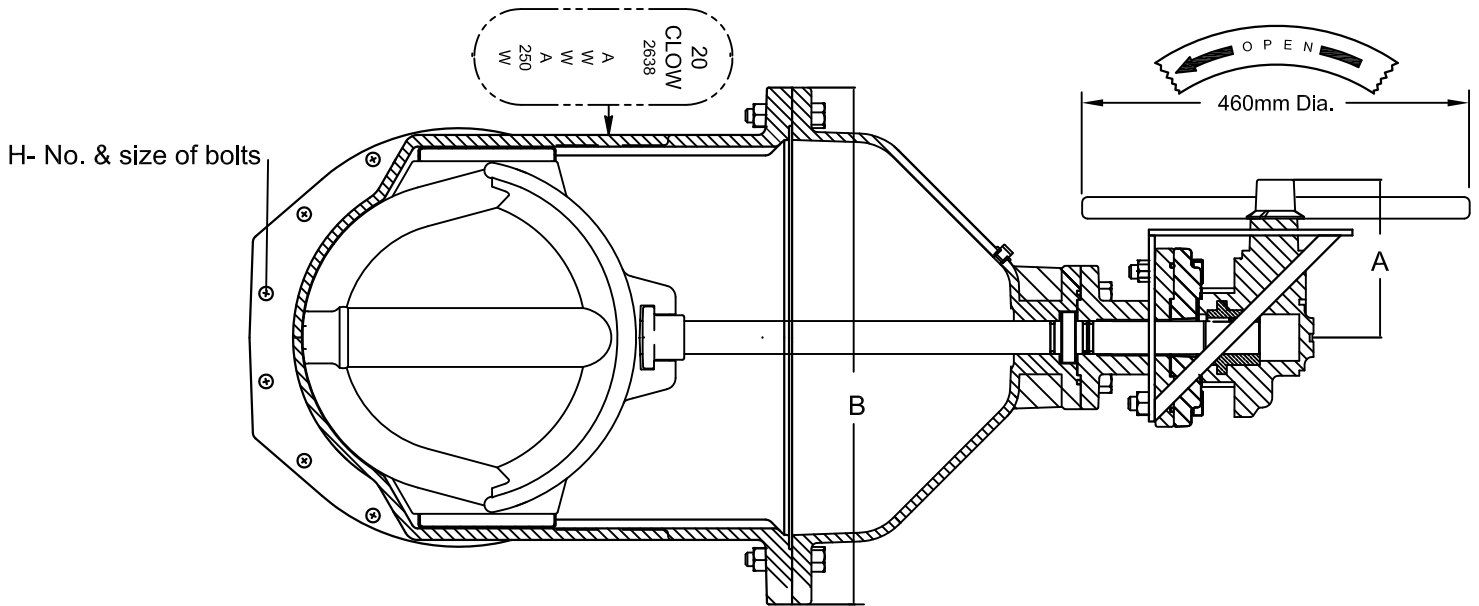
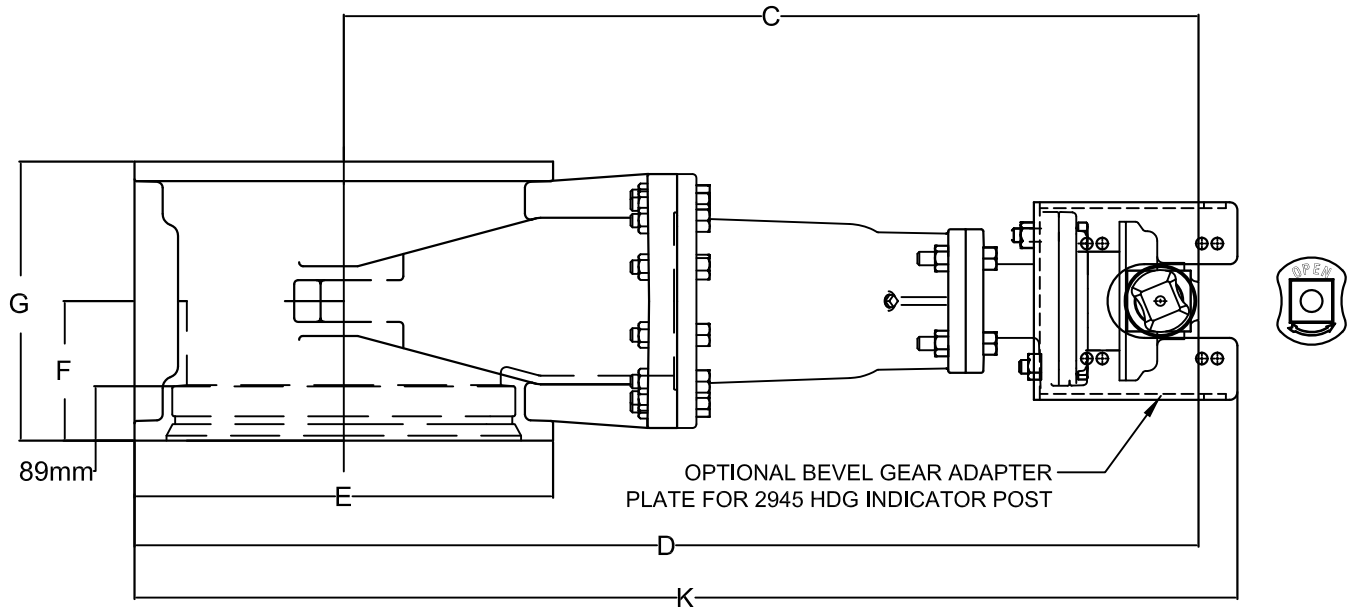
CONTRACTOR

DISTRIBUTOR

CONSULTANT

CLOW FIGURE NUMBER F-6100-BG

CLOW MODEL 2638 AWWA C515  
REDUCED WALL DUCTILE IRON



METRIC DIMENSIONS										NUMBER of TURNS NO GEAR	NUMBER of TURNS W/ GEAR	WEIGHT W/2" NUT	WEIGHT W/HW	WEIGHT W/BG ADAPT. PLATE	
VALVE SIZE	A	B	C	D	E	F	G	H	J						K
350 mm	230	675	1160	1500	515	215	430	10-3/4	1185	1655	52	100	740 lbs	760 lbs	770 lbs
400 mm	230	675	1210	1500	570	215	430	12-3/4	1160	1655	52	100	785 lbs	805 lbs	815 lbs
450 mm	260	820	1415	1735	630	230	475	12-3/4	1365	1890		189	1325 lbs	1345 lbs	1355 lbs
500 mm	260	820	1390	1735	685	230	460	14-3/4	1340	1890		189	1325 lbs	1345 lbs	1355 lbs

# CLOW CANADA

350 - 500 R/W GV MJ END SPUR GEAR  
GENERAL DIMENSIONS

PROJECT

OWNER

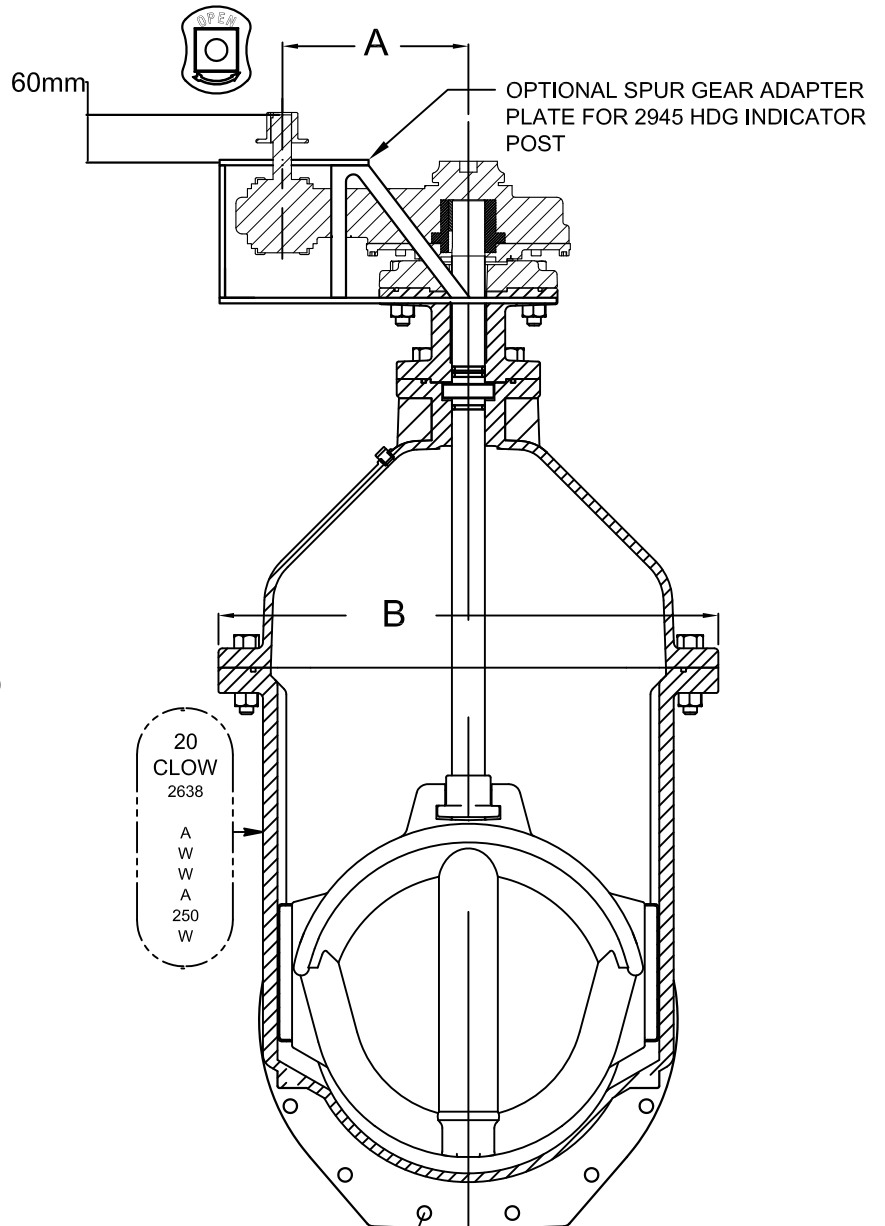
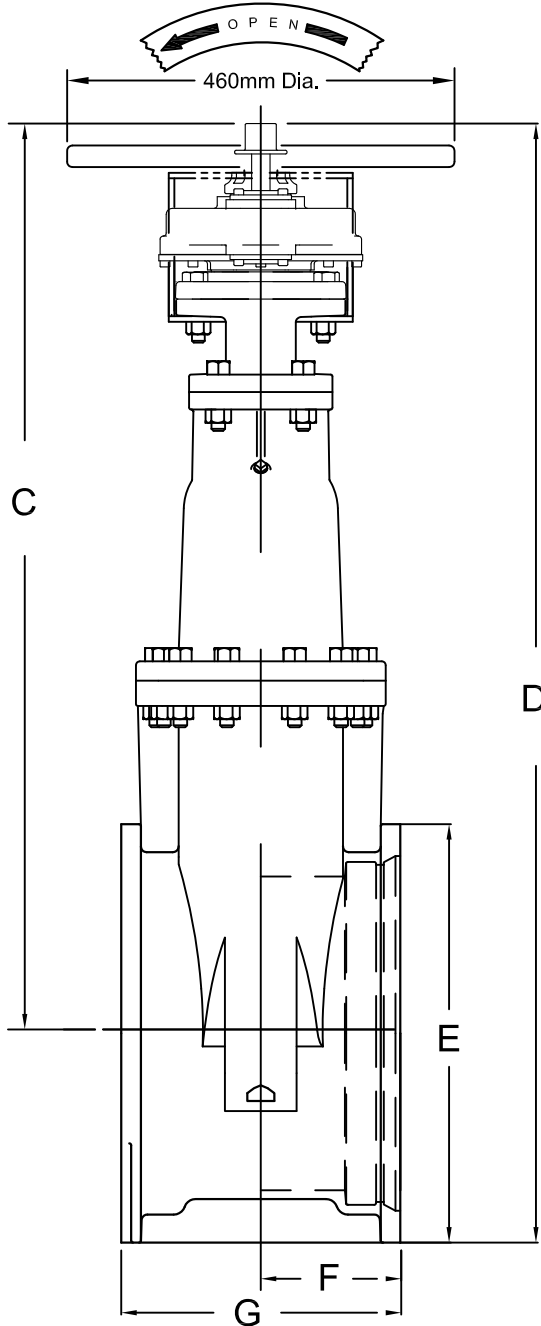
CONTRACTOR

DISTRIBUTOR

CONSULTANT

CLOW FIGURE NUMBER F-6100-SG

CLOW MODEL 2638 AWWA C515  
REDUCED WALL DUCTILE IRON



H - No. & SIZE OF BOLTS  
DRILLING PER ANSI B16.1  
Class 125

## METRIC DIMENSIONS

VALVE SIZE	A	B	C	D	E	F	G	H	NUMBER of TURNS NO GEAR	NUMBER of TURNS W/ GEAR	WEIGHT W/2" NUT	WEIGHT W/HW	WEIGHT W/BG ADAPT. PLATE
350 mm	200	675	1235	1510	515	215	430	10-3/4	52	100	775 lbs	795 lbs	805 lbs
400 mm	300	675	1210	1510	570	215	430	12-3/4	52	100	820 lbs	840 lbs	850 lbs
450 mm	300	820	1485	1800	630	230	475	12-3/4		189	1360 lbs	1380 lbs	1465 lbs
500 mm	300	820	1485	1800	685	230	460	14-3/4		189	1360 lbs	1380 lbs	1465 lbs

# CLOW CANADA

350mm - 500mm R/W VALVE FLANGED END  
BEVEL GEAR GENERAL DIMENSIONS

PROJECT

OWNER

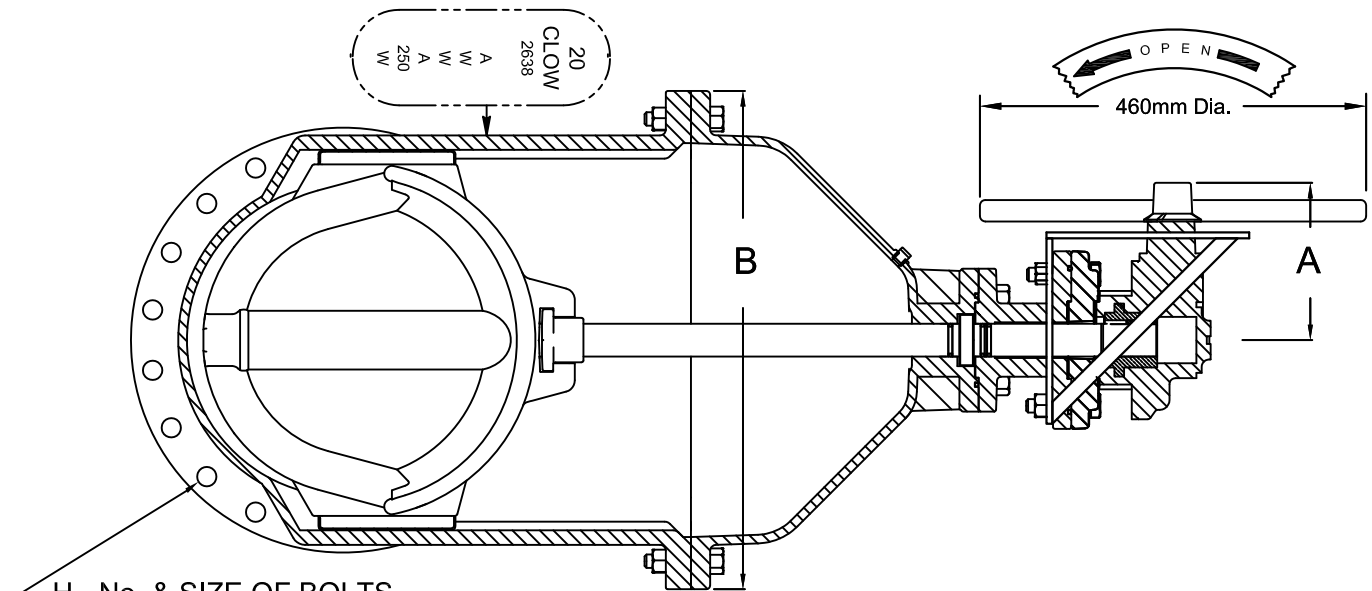
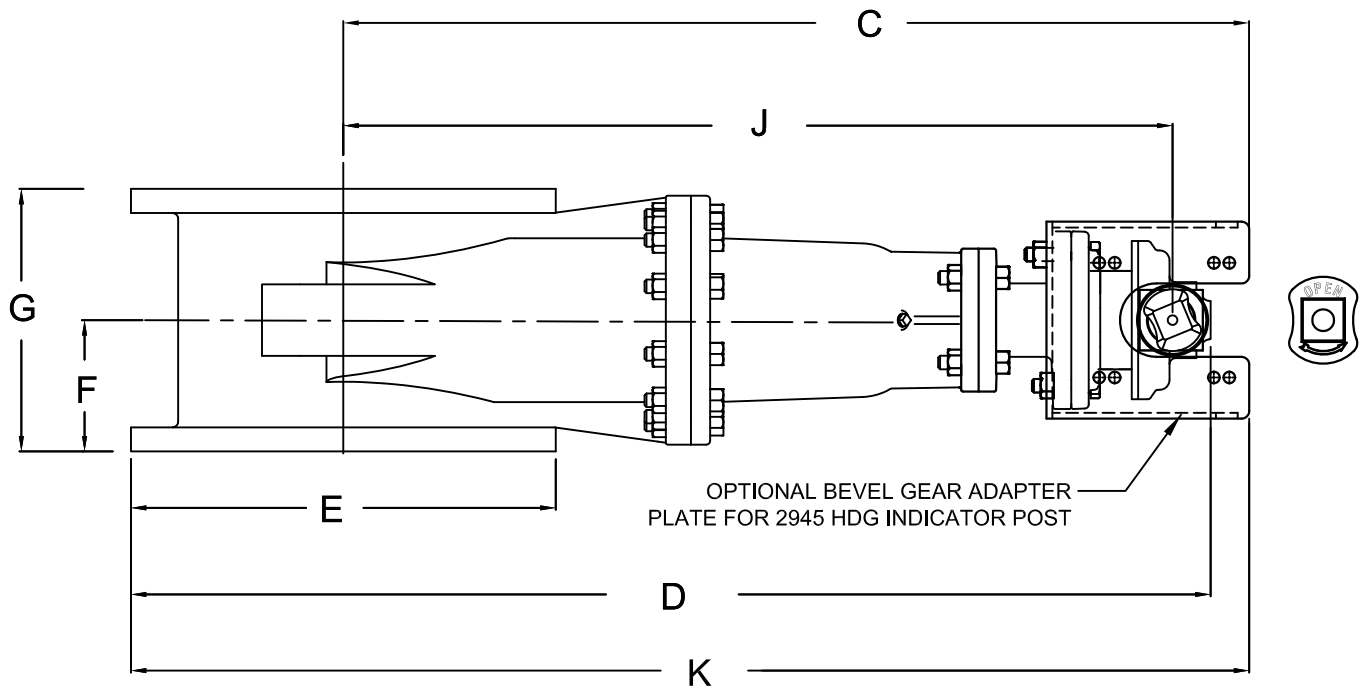
CONTRACTOR

DISTRIBUTOR

CONSULTANT

CLOW FIGURE NUMBER F-6102-BG

CLOW MODEL 2638 AWWA C515  
REDUCED WALL DUCTILE IRON



H - No. & SIZE OF BOLTS  
DRILLING PER ANSI B16.1  
Class 125

METRIC DIMENSIONS											NUMBER of TURNS NO GEAR	NUMBER of TURNS W/ GEAR	WEIGHT W/2" NUT	WEIGHT W/HW	WEIGHT W/BG ADAPT. PLATE
VALVE SIZE	A	B	C	D	E	F	G	H (Inches)	J	K					
350mm	230	680	1235	1510	535	190	380	12-1	1180	1570	52	100	665 lbs	685 lbs	695 lbs
400mm	230	680	1210	1510	595	205	406	16-1	1150	1570	52	100	720 lbs	740 lbs	750 lbs
450mm	260	820	1420	1735	635	215	432	16-1 1/8	1365	1806		189	1425 lbs	1445 lbs	1455 lbs
500mm	260	820	1390	1735	700	230	457	20-1 1/8	1340	1813		189	1350 lbs	1370 lbs	1380 lbs

# CLOW CANADA

350mm - 500mm FLANGED RW GATE VALVE  
WITH SPUR GEAR

PROJECT

OWNER

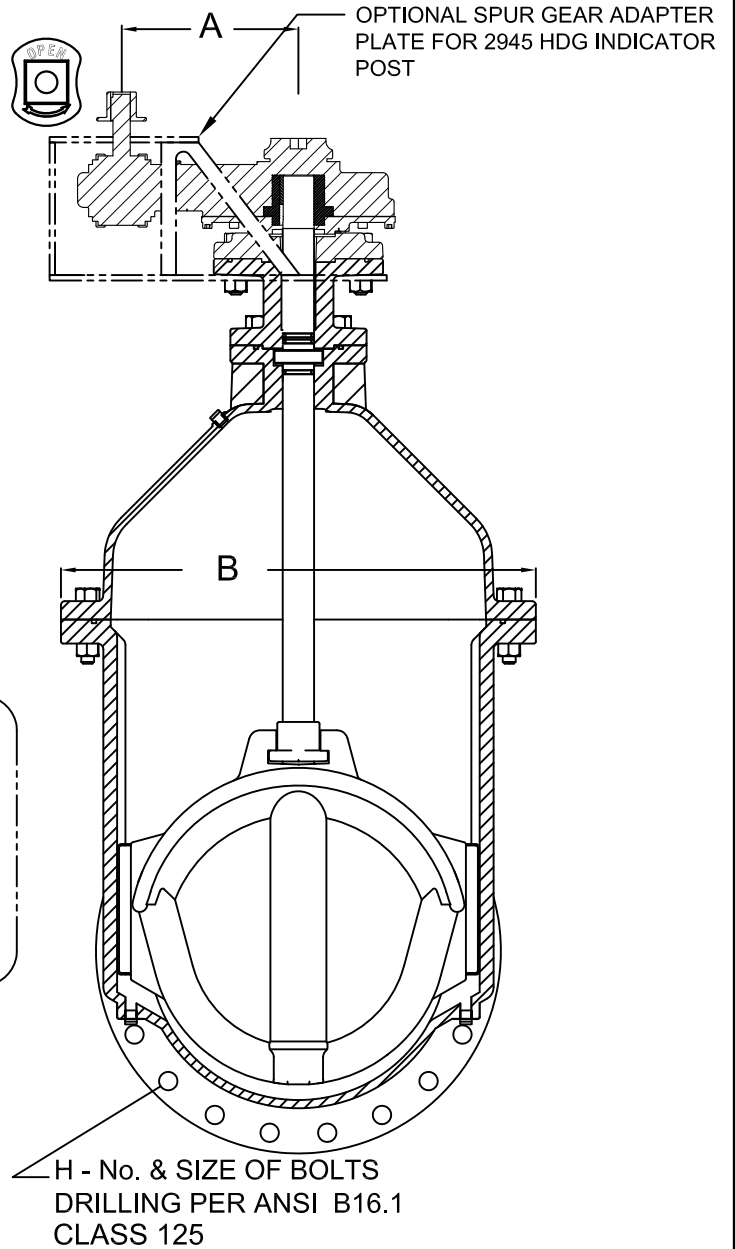
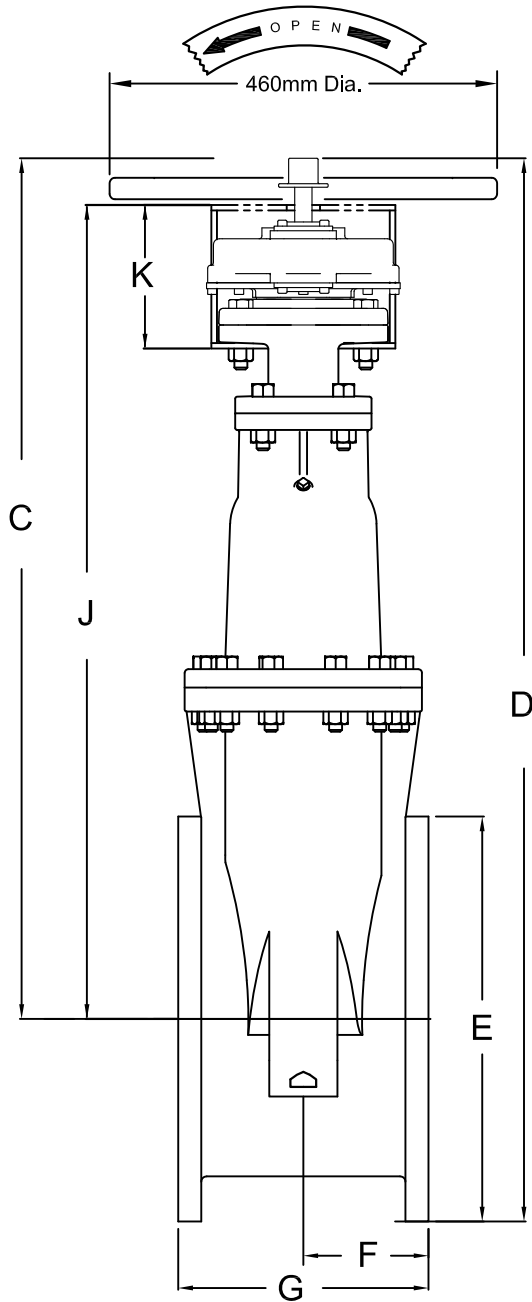
CONTRACTOR

DISTRIBUTOR

CONSULTANT

CLOW FIGURE NUMBER F-6102-SG

CLOW MODEL 2638 AWWA C515  
REDUCED WALL DUCTILE IRON



2638  
A  
W  
A  
250  
W

METRIC DIMENSIONS										NUMBER of TURNS NO GEAR	NUMBER of TURNS W/ GEAR	WEIGHT W/2" NUT	WEIGHT W/HW	WEIGHT W/SG ADAPT. PLATE	
VALVE SIZE	A	B	C	D	E	F	G	H	J						K
350mm	200	680	1300	1600	535	190	380	12 - 1"	1235	254	52	100	700 lbs	720 lbs	730 lbs
400mm	200	680	1335	1600	595	205	406	16 - 1"	1270	254	52	100	755 lbs	775 lbs	785 lbs
450mm	300	820	1450	1790	635	215	432	16 - 1 1/8"	1385	254	----	189	1460 lbs	1480 lbs	1490 lbs
500mm	300	820	1475	1790	700	230	457	20 - 1 1/8"	1410	254	----	189	1385 lbs	1405lbs	1415 lbs

# CLOW CANADA

350 - 500 R/W VALVE MJ x FLG END  
BEVEL GEAR GENERAL DIMENSIONS

CLOW FIGURE NUMBER F6106BG

CLOW MODEL 2638 AWWA C515  
REDUCED WALL DUCTILE IRON

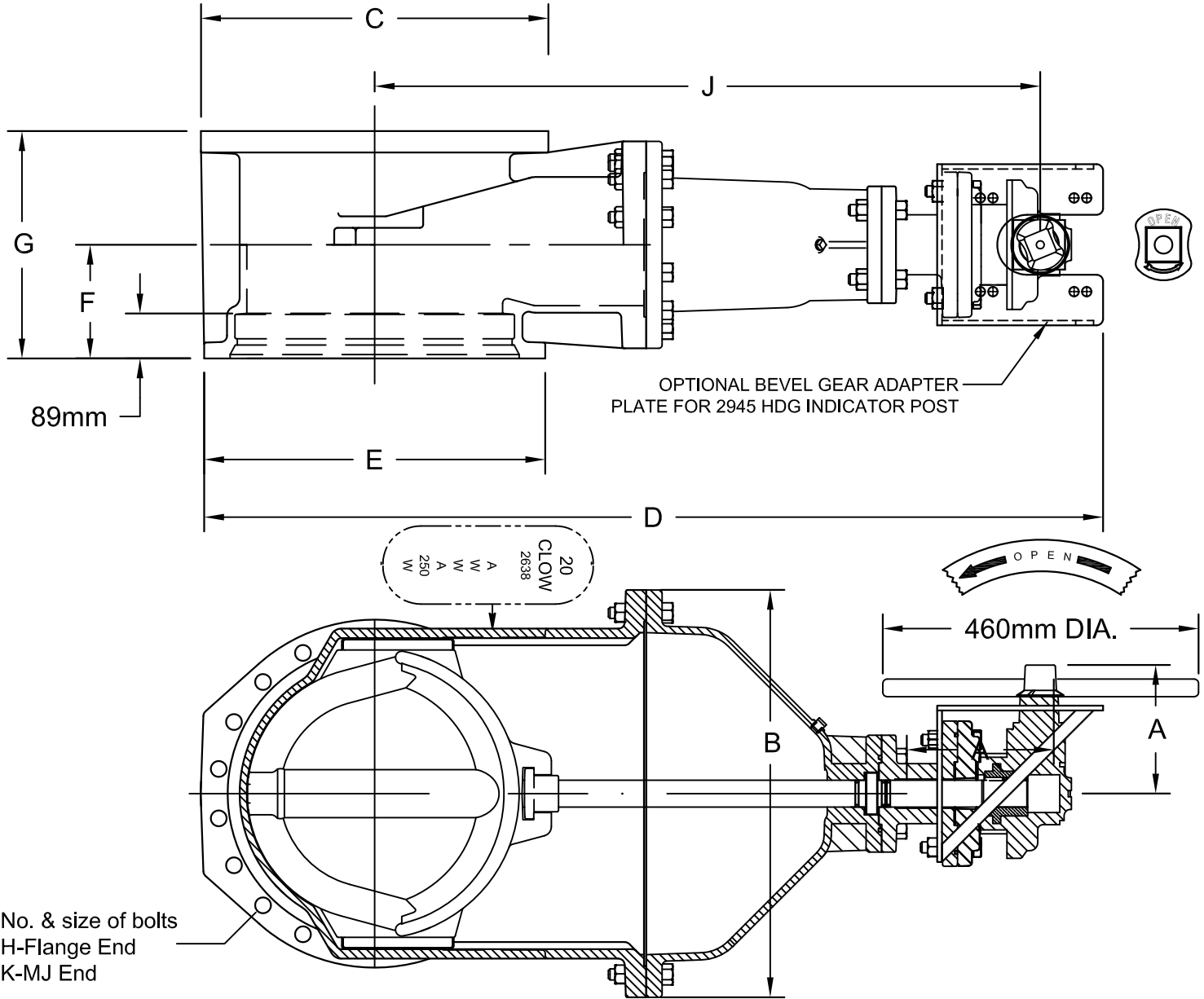
PROJECT

OWNER

CONTRACTOR

DISTRIBUTOR

CONSULTANT



ALL DIMENSIONS IN MILLIMETERS

VALVE SIZE	A	B	C	D	E	F	G	H	J	K	NUMBER OF TURNS NO GEAR	NUMBER OF TURNS W/ GEAR	WEIGHT W/2" NUT	WEIGHT W/ H/W/H	WEIGHT W/BG ADAPT. PLATE
350 mm	230	675	535	1608	515	215	430	12-1 1/8	1185	10-3/4	52	100	750 lbs	770 lbs	780 lbs
400 mm	230	675	595	1613	570	215	430	16-1	1160	12-3/4	52	100	850 lbs	870 lbs	880 lbs
450 mm	260	820	635	1838	630	230	475	16-1 1/8	1365	12-3/4		189	1400 lbs	1420 lbs	1430 lbs
500 mm	260	820	700	1846	685	230	460	20-1 1/8	1340	14-3/4		189	1500 lbs	1520 lbs	1530 lbs

# CLOW CANADA

350 - 500 R/W VALVE MJ x FLG END  
SPUR GEAR GENERAL DIMENSIONS

CLOW FIGURE NUMBER F6106SG

CLOW MODEL 2638 AWWA C515  
REDUCED WALL DUCTILE IRON

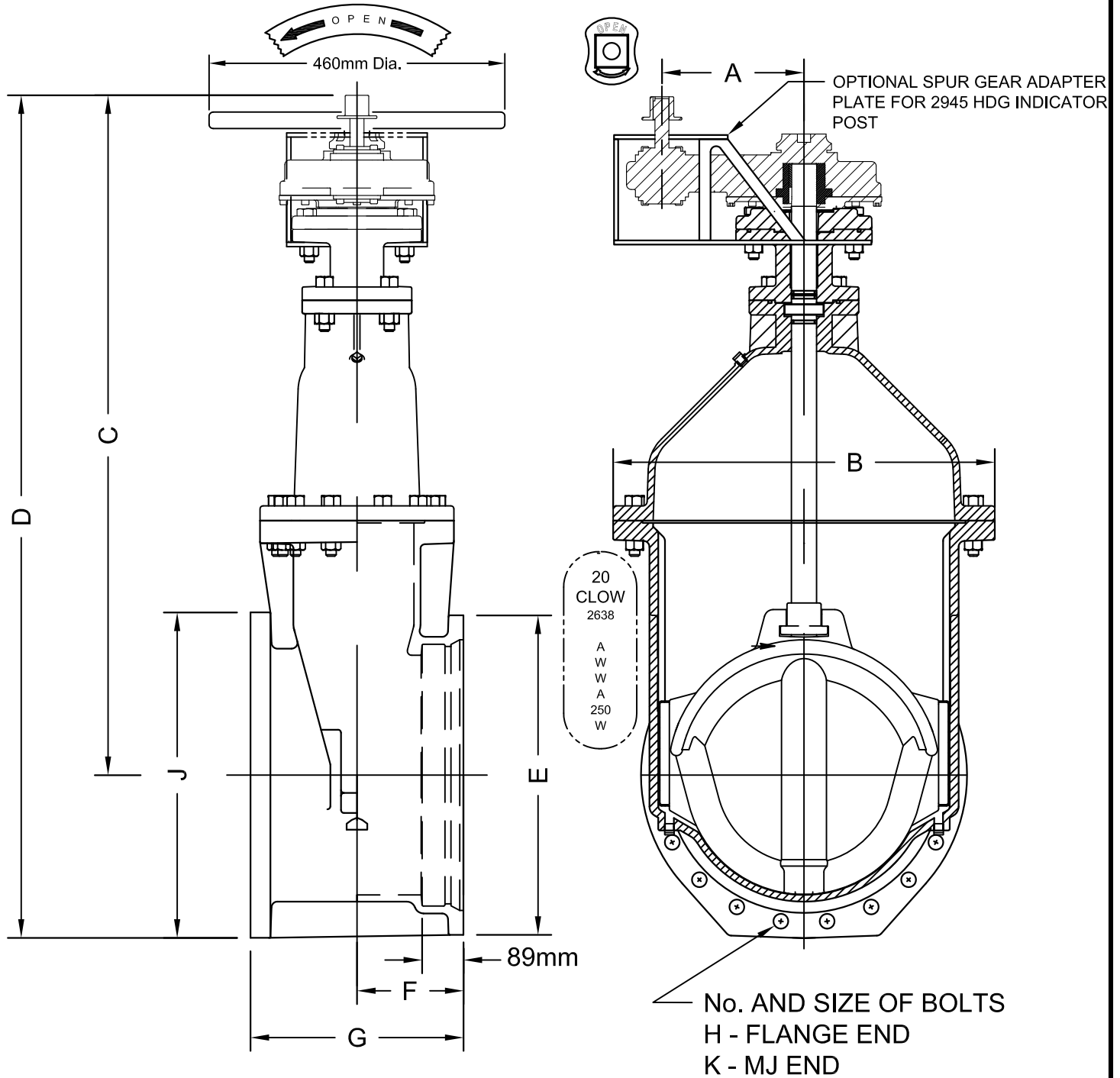
PROJECT

OWNER

CONTRACTOR

DISTRIBUTOR

CONSULTANT



## ALL DIMENSIONS IN MILLIMETERS

VALVE SIZE	A	B	C	D	E	F	G	H	J	K	No. OF TURNS NO GEAR	No. OF TURNS W/GEAR	WEIGHT W/2" NUT	WEIGHT W/ H/W/H	WEIGHT W/SG ADAPT PLATE
350 mm	203	675	1300	1588	515	215	430	12 - 1"	535	10-3/4	52	100	785 lbs	805 lbs	815 lbs
400 mm	203	675	1335	1588	570	215	430	16-1"	595	12-3/4	52	100	885 lbs	908 lbs	915 lbs
450 mm	305	820	1450	1790	630	230	475	16-1 1/8"	635	12-3/4		189	1435 lbs	1455 lbs	1465 lbs
500 mm	305	820	1475	1790	685	230	460	20-1 1/8"	700	14-3/4		189	1535 lbs	1555 lbs	1565 lbs