



K17 INDUSTRIAL HYDRANT

CERTIFICATIONS

ISO 9001

ISO 14001

BS OHSAS 18001



PATENT # 9,260,840

PATENT # 9,260,844

PATENT PENDING

Manufactured by

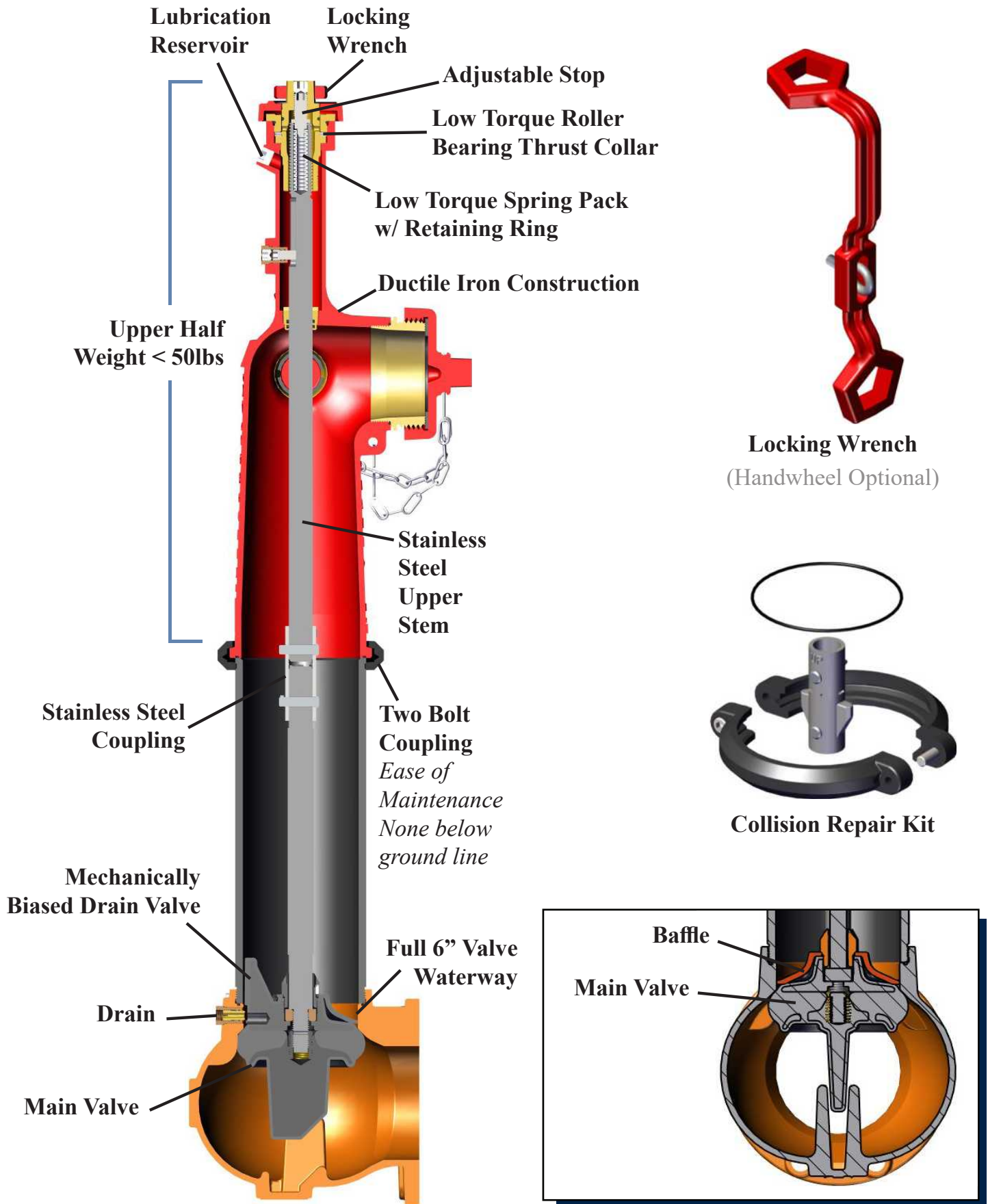


KENNEDY VALVE



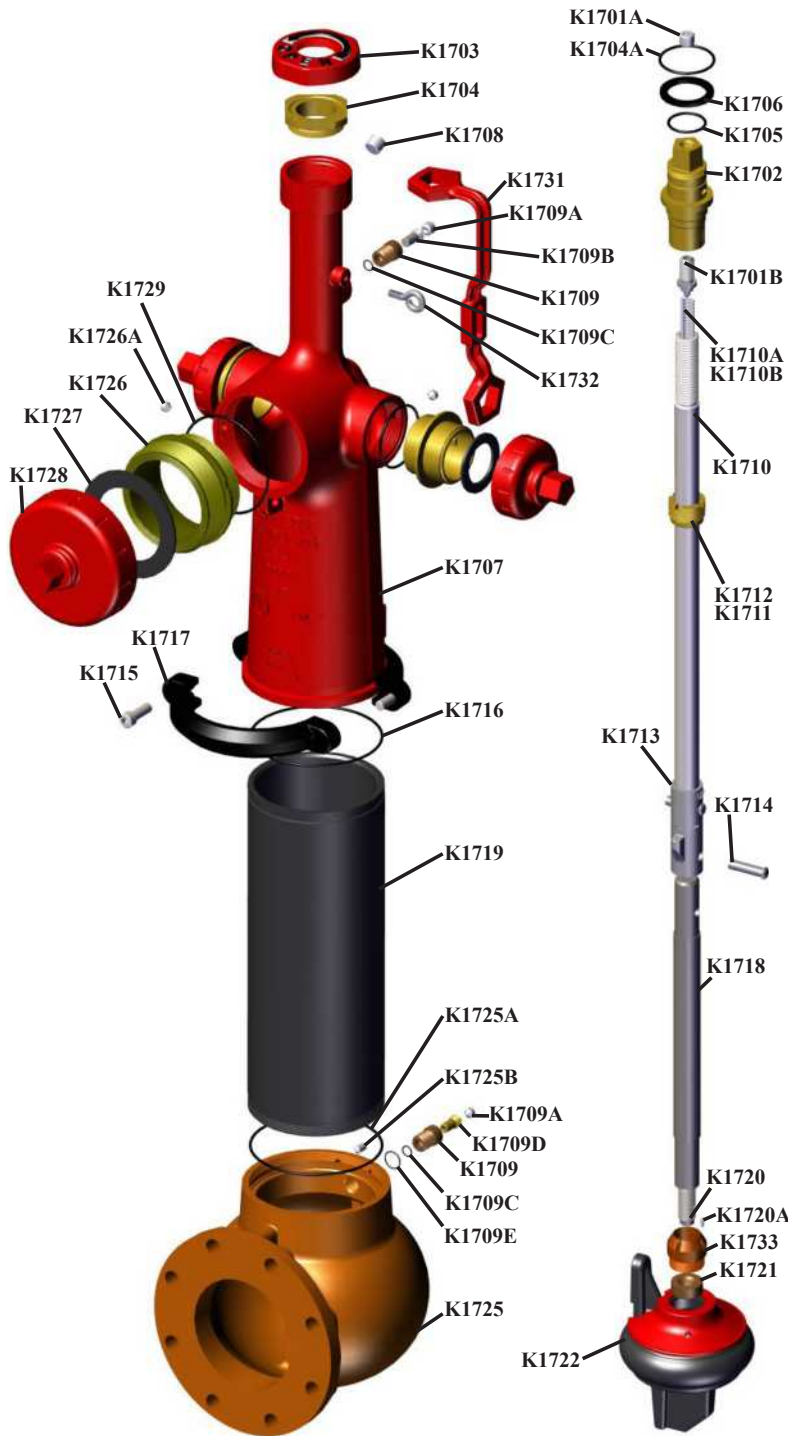
WWW.KENNEDYVALVE.COM





HYDRANT PART LIST

K17



CALLOUT	DESCRIPTION	MATERIAL ASTM
K1701A	STEM LOCK SET SCREW	STAINLESS STEEL A276 (410)
K1701B	MAIN VALVE STOP	STAINLESS STEEL A276 (410)
K1702	OP NUT	BRONZE B584 C86300/C86700
K1703	DIRT SHIELD	CAST IRON A126 Class B
K1704	LOCK NUT	BRONZE B584 C87850
K1704A	O-RING	BUNA-N RUBBER D2000
K1705	O-RING	VITON D2000
K1706	ROLLER BEARING ASSEMBLY	STEEL
K1707	UPPER BARREL	DUCTILE IRON A536 GR. 70-50-05 or 65-45-12
K1708	1/2" NPT PIPE PLUG	LOW CARBON STEEL
K1709	BUSHING	NI-ALUMINUM BRONZE OR DUCTILE IRON B150 C63000 or A536 GR.70-50-05 or GR.65-45-12
K1709A	STEM PIN SET SCREW	STAINLESS STEEL A276 (410)
K1709B	STEM PIN	STAINLESS STEEL A276 (410)
K1709C	O-RING	BUNA-N RUBBER D2000
K1709D	ADJUSTABLE DRAIN VALVE	ALUMINUM BRONZE, MANGANESE BRONZE OR STAINLESS STEEL B150 C62300 or C62400; B138 C67300; A276 S30400; B505 C95400
K1709E	O-RING	BUNA-N RUBBER D2000
K1710	UPPER STEM	STAINLESS STEEL A276 S30400 / S31600
K1710A	RETAINING RING	STEEL SAE 1070-1090 HIGH CARBON
K1710B	SPRING PACK	SPRING STEEL
K1711	O-RING	BUNA-N RUBBER D2000
K1712	STEM BUSHING	DUCTILE IRON OR ALUMINUM BRONZE A536 GR. 70-50-05 or 65-45-12 PLATED; or B505 C95400
K1713	BREAKING COUPLING	STAINLESS STEEL A743 CA15 (410SS)
K1714	COUPLING PINS	STAINLESS STEEL 302HQ or 410SS
K1715	BARREL COUPLING BOLTS	STEEL (ZINC PLATED) A307 / SAE GR. 2 or 410SS
K1716	O-RING	BUNA-N RUBBER D2000
K1717	BARREL COUPLING	DUCTILE IRON A536 GRADE 70-50-05
K1718	LOWER STEM	CRS OR STAINLESS STEEL A108 CRS or A276 S30400 or S31600
K1719	LOWER BARREL	DUCTILE IRON ANSI / AWWA C151 / A21.51
K1720	DRAIN VALVE RETAINING NUT	DI OR STAINLESS OR ALUMINUM BRONZE OR MANGANESE BRONZE A536 GR. 70-50-05 or 65-45-12; A276 S30400; B505 C95400 or C86300
K1720A	DRAIN NUT SET SCREW	STAINLESS STEEL
K1721	LOWER STEM COLLAR	ALUMINUM BRONZE OR STAINLESS STEEL B505 C95400 or A276 S30400
K1722	MAIN VALVE, ONE PIECE ENCAPSULATED RUBBER	EPDM RUBBER
K1725	ELBOW	DUCTILE IRON A536 GRADE 70-50-05 / 65-45-12
K1725A	O-RING	BUNA-N RUBBER D2000
K1725B	ELBOW SET SCREWS	STAINLESS STEEL 18-8
K1726	HOSE / STEAMER NOZZLE	BRONZE B584 C87850/C86700/C86300
K1726A	NOZZLE RETAINING SCREW	STAINLESS STEEL 18-8
K1727	NOZZLE GASKET	NEOPRENE D2000
K1728	NOZZLE CAP	CAST IRON A126 Class B
K1729	O-RING	BUNA-N RUBBER D2000
K1731	WRENCH	DUCTILE IRON A536 GRADE 70-50-05 / 65-45-12
K1732	EYE BOLT	ZINC PLATED STEEL
K1733	BAFFLE	DUCTILE IRON A536 GRADE 70-50-05 or 65-45-12

K17 MONITOR



- 3" & 4" Monitor ANSI Flange Drilling
- Integrally Cast Monitor to Upper Barrel
- UL Approved & FM Listed
- Meets or exceeds AWWA C502
- Full flow 4 way openings: 4" monitor, 1 - 4-1/2 pumper nozzle, 2 - 2-1/2 hose nozzles
- Shoe interior epoxy coating meets AWWA C550

Shoe with choice of:

- 6" MJ
- 6" ANSI Flange
- Straight Shoe
- DN150



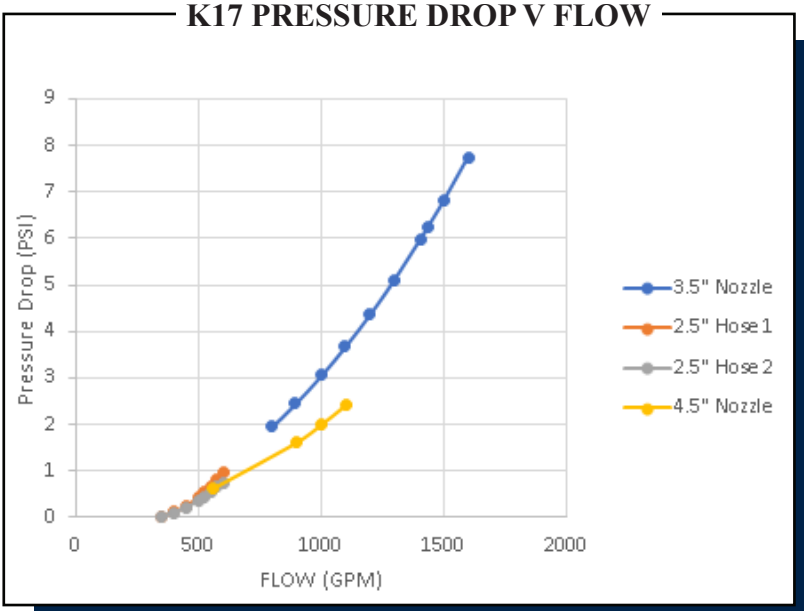
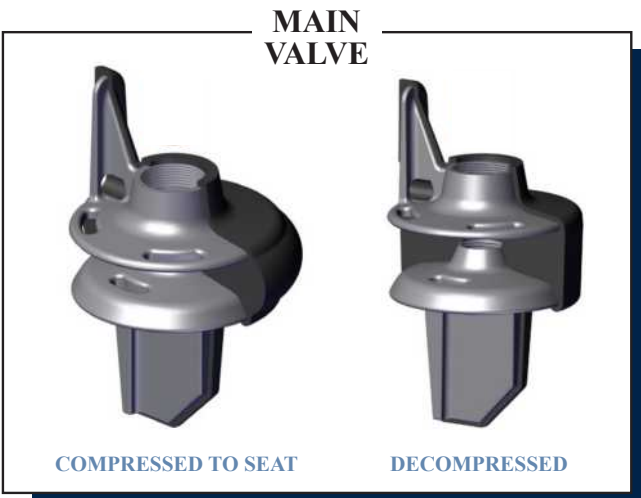
K17 HYDRANT WITH STRAIGHT SHOE

- Allows for install in vertical pipeline
- Shares common components with standard shoe
- UL Approved & FM Listed
- Meets or exceeds AWWA C502

The Kennedy Valve 6" Main Valve K17 Hydrant is designed effectively for industrial applications. The K17 incorporates an adjustable main valve. This significant design advantage allows the K17 to have a higher CV rate than 5-1/4" hydrants. The pressure loss due to friction shall be less than 2.0 PSI at 1000 gpm through a 4-1/2" pumper nozzle. The number and size of nozzles, nozzle valves, base, or monitor connection to be per order or conform to the existing plant details previously established.

- 1| Low head loss, below 2 PSI at 1000 GPM
- 2| Full 6" diameter adjustable main valve
- 3| Security Locking wrench system
- 4| Only 2 bolts per hydrant. No bolts below ground line.
- 5| Meets or exceeds all applicable parts of AWWA C502, UL 246, & FM 1510
- 6| Integral Upper half < 50lbs., one man repair
- 7| Low torque to open collar roller bearing
- 8| Straight Shoe option
- 9| Adjustable stop at the top.
- 10| 350 PSI. Rated Pressure (2415 kPa)
700 PSI. Test Pressure (4830 kPa)
- 11| Patent Pending* Anti Cavitation Baffle
- 12| Spring Pack & Roller Bearing allow easy operation.

350 PSI RATED
 Low Head Loss < 2 PSI @1000 GPM
 Simplified Design
 (No Seat Ring or Bonnet)
 Main Valve is adjustable for leakage correction or removal.



WE PROUDLY SERVE



PETROLEUM OIL & GAS



MANUFACTURING



AIRCRAFT HANGARS



CHEMICAL PLANTS

CLOW
CLOW CANADA

**ORDERING
INFORMATION**

PH: 800-561-9931
905-548-9604
FAX: 905-547-0113

WWW.CLOWCANADA.COM

CLOW CANADA

1757 BURLINGTON ST. E.,
P.O. BOX 2849
HAMILTON, ONT. L8N 3R5

**Manufactured by
KENNEDY VALVE**

1021 E. WATER ST.
ELMIRA, NY
14902-1516



For Generations

K17 CLOW: REV 0 FEB 2020